

mGluR-4 Polyclonal Antibody

Catalog # AP70927

Product Information

Application	WB, IHC-P, IF, ICC, E
Primary Accession	Q14833
Reactivity	Human, Mouse, Rat
Host	Rabbit
Clonality	Polyclonal
Calculated MW	101868

Additional Information

Gene ID	2914
Other Names	GRM4; GPRC1D; MGLUR4; Metabotropic glutamate receptor 4; mGluR4
Dilution	WB~~Western Blot: 1/500 - 1/2000. Immunohistochemistry: 1/100 - 1/300. ELISA: 1/10000. Not yet tested in other applications. IHC-P~~N/A IF~~1:50~200 ICC~~N/A E~~N/A
Format	Liquid in PBS containing 50% glycerol, 0.5% BSA and 0.09% (W/V) sodium azide.
Storage Conditions	-20°C

Protein Information

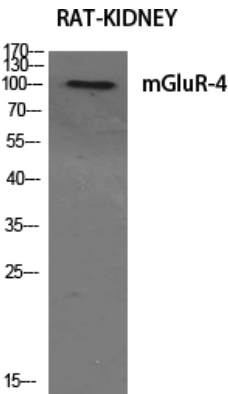
Name	GRM4
Synonyms	GPRC1D, MGLUR4
Function	G-protein coupled receptor for glutamate. Ligand binding causes a conformation change that triggers signaling via guanine nucleotide-binding proteins (G proteins) and modulates the activity of down-stream effectors. Signaling inhibits adenylate cyclase activity.
Cellular Location	Cell membrane; Multi-pass membrane protein
Tissue Location	Strongly expressed in the cerebellum. Expressed at low levels in hippocampus, hypothalamus and thalamus. No expression detected in liver.

Background

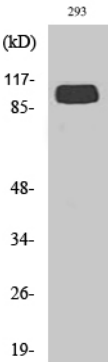
G-protein coupled receptor for glutamate. Ligand binding causes a conformation change that triggers signaling via guanine nucleotide-binding proteins (G proteins) and modulates the activity of down-stream

effectors. Signaling inhibits adenylate cyclase activity.

Images



Western Blot analysis of various cells using mGluR-4 Polyclonal Antibody diluted at 1 : 500



Western Blot analysis of 293 cells using mGluR-4 Polyclonal Antibody diluted at 1 : 500

Please note: All products are 'FOR RESEARCH USE ONLY. NOT FOR USE IN DIAGNOSTIC OR THERAPEUTIC PROCEDURES'.