

M-cadherin Polyclonal Antibody

Catalog # AP70860

Product Information

Application	WB, IHC-P
Primary Accession	P55291
Reactivity	Human, Mouse, Rat
Host	Rabbit
Clonality	Polyclonal
Calculated MW	88916

Additional Information

Gene ID	1013
Other Names	CDH15; CDH14; CDH3; Cadherin-15; Cadherin-14; Muscle cadherin; M-cadherin
Dilution	WB~~Western Blot: 1/500 - 1/2000. Immunohistochemistry: 1/100 - 1/300. ELISA: 1/10000. Not yet tested in other applications. IHC-P~~N/A
Format	Liquid in PBS containing 50% glycerol, 0.5% BSA and 0.09% (W/V) sodium azide.
Storage Conditions	-20°C

Protein Information

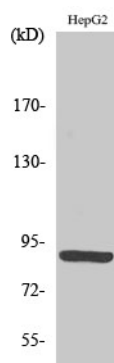
Name	CDH15
Synonyms	CDH14, CDH3
Function	Cadherins are calcium-dependent cell adhesion proteins. They preferentially interact with themselves in a homophilic manner in connecting cells; cadherins may thus contribute to the sorting of heterogeneous cell types. M-cadherin is part of the myogenic program and may provide a trigger for terminal muscle differentiation.
Cellular Location	Cell membrane; Single-pass type I membrane protein
Tissue Location	Expressed in the brain and cerebellum.

Background

Cadherins are calcium-dependent cell adhesion proteins. They preferentially interact with themselves in a homophilic manner in connecting cells; cadherins may thus contribute to the sorting of heterogeneous cell

types. M-cadherin is part of the myogenic program and may provide a trigger for terminal muscle differentiation.

Images



Western Blot analysis of various cells using M-cadherin Polyclonal Antibody diluted at 1 : 500

Please note: All products are 'FOR RESEARCH USE ONLY. NOT FOR USE IN DIAGNOSTIC OR THERAPEUTIC PROCEDURES'.