

Matriptase Polyclonal Antibody

Catalog # AP70847

Product Information

Application	WB, IF, ICC, E
Primary Accession	Q9Y5Y6
Reactivity	Human, Rat, Mouse
Host	Rabbit
Clonality	Polyclonal
Calculated MW	94770

Additional Information

Gene ID	6768
Other Names	ST14; PRSS14; SNC19; TADG15; Suppressor of tumorigenicity 14 protein; Matriptase; Membrane-type serine protease 1; MT-SP1; Prostamin; Serine protease 14; Serine protease TADG-15; Tumor-associated differentially-expressed gene 15 protein
Dilution	WB--Western Blot: 1/500 - 1/2000. Immunofluorescence: 1/200 - 1/1000. ELISA: 1/10000. Not yet tested in other applications. IF--1:50~200 ICC--N/A E--N/A
Format	Liquid in PBS containing 50% glycerol, 0.5% BSA and 0.09% (W/V) sodium azide.
Storage Conditions	-20°C

Protein Information

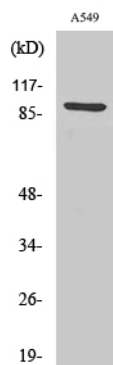
Name	ST14
Synonyms	PRSS14, SNC19, TADG15
Function	Exhibits trypsin-like activity as defined by cleavage of synthetic substrates with Arg or Lys as the P1 site (PubMed: 10373424). Involved in the terminal differentiation of keratinocytes through prostasin (PRSS8) activation and filaggrin (FLG) processing (PubMed: 18843291). Proteolytically cleaves and therefore activates TMPRSS13 (PubMed: 28710277).
Cellular Location	Membrane; Single-pass type II membrane protein

Background

Degrades extracellular matrix. Proposed to play a role in breast cancer invasion and metastasis. Exhibits

trypsin-like activity as defined by cleavage of synthetic substrates with Arg or Lys as the P1 site. Involved in the terminal differentiation of keratinocytes through prostaticin (PRSS8) activation and filaggrin (FLG) processing.

Images



Western Blot analysis of various cells using Matriptase Polyclonal Antibody

Please note: All products are 'FOR RESEARCH USE ONLY. NOT FOR USE IN DIAGNOSTIC OR THERAPEUTIC PROCEDURES'.