

MASP-2 Polyclonal Antibody

Catalog # AP70839

Product Information

Application	WB, E
Primary Accession	O00187
Reactivity	Human, Rat, Mouse
Host	Rabbit
Clonality	Polyclonal

Additional Information

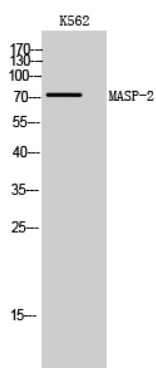
Other Names	MASP2; Mannan-binding lectin serine protease 2; MBL-associated serine protease 2; Mannose-binding protein-associated serine protease 2; MASP-2
Dilution	WB~Western Blot: 1/500 - 1/2000. ELISA: 1/20000. Not yet tested in other applications. E~N/A
Format	Liquid in PBS containing 50% glycerol, 0.5% BSA and 0.09% (W/V) sodium azide.
Storage Conditions	-20°C

Protein Information

Background

Serum protease that plays an important role in the activation of the complement system via mannose-binding lectin. After activation by auto-catalytic cleavage it cleaves C2 and C4, leading to their activation and to the formation of C3 convertase.

Images



Western Blot analysis of K562 cells using MASP-2 Polyclonal Antibody

Please note: All products are 'FOR RESEARCH USE ONLY. NOT FOR USE IN DIAGNOSTIC OR THERAPEUTIC PROCEDURES'.