

GALK1 Antibody (C-term)

Purified Rabbit Polyclonal Antibody (Pab)
Catalog # AP7081b

Product Information

| | |
|--------------------------|------------------------|
| Application | WB, E |
| Primary Accession | P51570 |
| Reactivity | Human, Mouse |
| Host | Rabbit |
| Clonality | Polyclonal |
| Isotype | Rabbit IgG |
| Clone Names | RB05317 |
| Antigen Region | 345-375 |

Additional Information

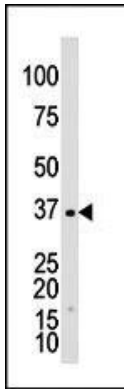
| | |
|---------------------------|-------------------------------------------------------------------------------------------------------------------------------------------------------------------------------------------|
| Other Names | Galactokinase, Galactose kinase, GALK1, GALK |
| Target/Specificity | This GALK1 antibody is generated from rabbits immunized with a KLH conjugated synthetic peptide between 345-375 amino acids from the C-terminal region of human GALK1. |
| Dilution | WB~~1:1000 E~~Use at an assay dependent concentration. |
| Format | Purified polyclonal antibody supplied in PBS with 0.09% (W/V) sodium azide. This antibody is prepared by Saturated Ammonium Sulfate (SAS) precipitation followed by dialysis against PBS. |
| Storage | Maintain refrigerated at 2-8°C for up to 2 weeks. For long term storage store at -20°C in small aliquots to prevent freeze-thaw cycles. |
| Precautions | GALK1 Antibody (C-term) is for research use only and not for use in diagnostic or therapeutic procedures. |

Protein Information

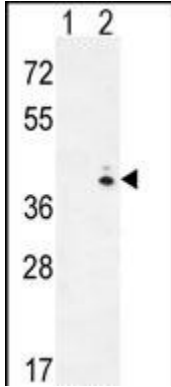
Background

Galactokinase is a major enzyme for the metabolism of galactose and its deficiency causes congenital cataracts in the adult population. GALK1 sequence shares the greatest level of conservation, 44.5% identity with that from E. coli and 34.6% amino acid identity with the product of the human GALK2 gene.

Images



The anti-GALK1 Pab (Cat. #AP7081b) is used in Western blot to detect GALK1 in Y79 cell lysate.



Western blot analysis of GALK1 (arrow) using rabbit polyclonal hGALK1-A360 (Cat. #AP7081b). 293 cell lysates (2 ug/lane) either nontransfected (Lane 1) or transiently transfected (Lane 2) with the GALK1 gene.

Please note: All products are 'FOR RESEARCH USE ONLY. NOT FOR USE IN DIAGNOSTIC OR THERAPEUTIC PROCEDURES'.