

Laminin α -5 Polyclonal Antibody

Catalog # AP70710

Product Information

Application	WB, IHC-P
Primary Accession	O15230
Reactivity	Human, Mouse
Host	Rabbit
Clonality	Polyclonal
Calculated MW	399737

Additional Information

Gene ID	3911
Other Names	LAMA5; KIAA0533; KIAA1907; Laminin subunit alpha-5; Laminin-10 subunit alpha; Laminin-11 subunit alpha; Laminin-15 subunit alpha
Dilution	WB~~Western Blot: 1/500 - 1/2000. Immunohistochemistry: 1/100 - 1/300. ELISA: 1/20000. Not yet tested in other applications. IHC-P~~N/A
Format	Liquid in PBS containing 50% glycerol, 0.5% BSA and 0.09% (W/V) sodium azide.
Storage Conditions	-20°C

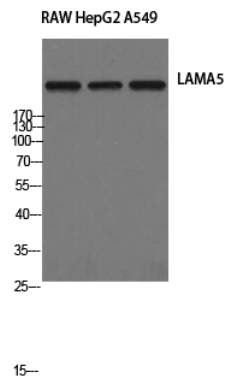
Protein Information

Name	LAMA5
Synonyms	KIAA0533, KIAA1907
Function	Binding to cells via a high affinity receptor, laminin is thought to mediate the attachment, migration and organization of cells into tissues during embryonic development by interacting with other extracellular matrix components. Plays a role in the regulation of skeletogenesis, through a mechanism that involves integrin-mediated signaling and PTK2B/PYK2 (PubMed: 33242826).
Cellular Location	Secreted, extracellular space, extracellular matrix, basement membrane. Note=Major component
Tissue Location	Expressed in heart, lung, kidney, skeletal muscle, pancreas, retina and placenta. Little or no expression in brain and liver. Expressed in muscle, ligaments, periosteum, trabecular bone and throughout the cartilage, particularly in the growth plate and in articular chondrocytes (PubMed:33242826)

Background

Binding to cells via a high affinity receptor, laminin is thought to mediate the attachment, migration and organization of cells into tissues during embryonic development by interacting with other extracellular matrix components.

Images



Western Blot analysis of RAW HepG2 A549 cells using Laminin α-5 Polyclonal Antibody

Please note: All products are 'FOR RESEARCH USE ONLY. NOT FOR USE IN DIAGNOSTIC OR THERAPEUTIC PROCEDURES'.