

Laminin α -4 Polyclonal Antibody

Catalog # AP70709

Product Information

Application	WB, IHC-P, IF
Primary Accession	Q16363
Reactivity	Human, Mouse
Host	Rabbit
Clonality	Polyclonal
Calculated MW	202568

Additional Information

Gene ID	3910
Other Names	LAMA4; Laminin subunit alpha-4; Laminin-14 subunit alpha; Laminin-8 subunit alpha; Laminin-9 subunit alpha
Dilution	WB~~Western Blot: 1/500 - 1/2000. Immunohistochemistry: 1/100 - 1/300. Immunofluorescence: 1/200 - 1/1000. ELISA: 1/40000. Not yet tested in other applications. IHC-P~~N/A IF~~1:50~200
Format	Liquid in PBS containing 50% glycerol, 0.5% BSA and 0.09% (W/V) sodium azide.
Storage Conditions	-20°C

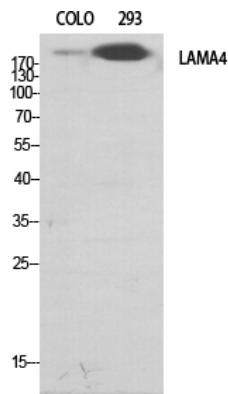
Protein Information

Name	LAMA4
Function	Binding to cells via a high affinity receptor, laminin is thought to mediate the attachment, migration and organization of cells into tissues during embryonic development by interacting with other extracellular matrix components.
Cellular Location	Secreted, extracellular space, extracellular matrix, basement membrane. Secreted. Note=Major basement membrane component
Tissue Location	Detected in placenta (at protein level) (PubMed:32337544). Detected in fibroblasts and urine (at protein level) (PubMed:25326458, PubMed:36213313, PubMed:37453717). In adult, strong expression in heart, lung, ovary small and large intestines, placenta, liver; weak or no expression in skeletal muscle, kidney, pancreas, testis, prostate, brain. High expression in fetal lung and kidney Expression in fetal and newborn tissues is observed in certain mesenchymal cells in tissues such as smooth muscle and dermis

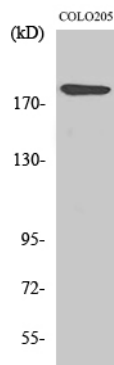
Background

Binding to cells via a high affinity receptor, laminin is thought to mediate the attachment, migration and organization of cells into tissues during embryonic development by interacting with other extracellular matrix components.

Images



Western Blot analysis of various cells using Laminin α -4 Polyclonal Antibody diluted at 1 : 500



Western Blot analysis of 293 cells using Laminin α -4 Polyclonal Antibody diluted at 1 : 500

Please note: All products are 'FOR RESEARCH USE ONLY. NOT FOR USE IN DIAGNOSTIC OR THERAPEUTIC PROCEDURES'.