

IQGAP1 Polyclonal Antibody

Catalog # AP70570

Product Information

Application	WB
Primary Accession	P46940
Reactivity	Human, Mouse
Host	Rabbit
Clonality	Polyclonal
Calculated MW	189252

Additional Information

Gene ID	8826
Other Names	IQGAP1; KIAA0051; Ras GTPase-activating-like protein IQGAP1; p195
Dilution	WB~~Western Blot: 1/500 - 1/2000. ELISA: 1/20000. Not yet tested in other applications.
Format	Liquid in PBS containing 50% glycerol, 0.5% BSA and 0.09% (W/V) sodium azide.
Storage Conditions	-20°C

Protein Information

Name	IQGAP1
Synonyms	KIAA0051
Function	Plays a crucial role in regulating the dynamics and assembly of the actin cytoskeleton. Recruited to the cell cortex by interaction with ILK which allows it to cooperate with its effector DIAPH1 to locally stabilize microtubules and allow stable insertion of caveolae into the plasma membrane (By similarity). Binds to activated CDC42 but does not stimulate its GTPase activity. Associates with calmodulin. May promote neurite outgrowth (PubMed: 15695813). May play a possible role in cell cycle regulation by contributing to cell cycle progression after DNA replication arrest (PubMed: 20883816).
Cellular Location	Cell membrane. Nucleus. Cytoplasm. Cytoplasm, cell cortex {ECO:0000250 UniProtKB:Q9JKF1}. Apical cell membrane. Basolateral cell membrane {ECO:0000250 UniProtKB:Q9JKF1}. Note=Subcellular distribution is regulated by the cell cycle, nuclear levels increase at G1/S phase (PubMed:20883816).

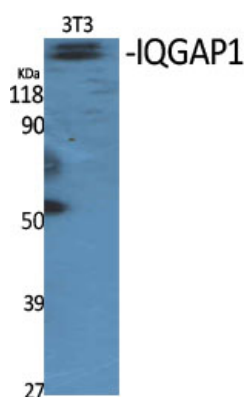
Tissue Location

Expressed in the placenta, lung, and kidney (PubMed:8051149). A lower level expression is seen in the heart, liver, skeletal muscle and pancreas (PubMed:8051149)

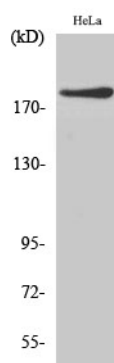
Background

Plays a crucial role in regulating the dynamics and assembly of the actin cytoskeleton. Binds to activated CDC42 but does not stimulate its GTPase activity. It associates with calmodulin. Could serve as an assembly scaffold for the organization of a multimolecular complex that would interface incoming signals to the reorganization of the actin cytoskeleton at the plasma membrane. May promote neurite outgrowth (PubMed:[15695813](#)). May play a possible role in cell cycle regulation by contributing to cell cycle progression after DNA replication arrest (PubMed:[20883816](#)).

Images



Western Blot analysis of various cells using IQGAP1
Polyclonal Antibody diluted at 1 : 1000



Western Blot analysis of HeLa cells using IQGAP1
Polyclonal Antibody diluted at 1 : 1000

Please note: All products are 'FOR RESEARCH USE ONLY. NOT FOR USE IN DIAGNOSTIC OR THERAPEUTIC PROCEDURES'.