

# Integrin $\beta$ 4 Polyclonal Antibody

Catalog # AP70555

## Product Information

---

|                          |                        |
|--------------------------|------------------------|
| <b>Application</b>       | WB, IHC-P, IF, ICC, E  |
| <b>Primary Accession</b> | <a href="#">P16144</a> |
| <b>Reactivity</b>        | Human, Mouse, Rat      |
| <b>Host</b>              | Rabbit                 |
| <b>Clonality</b>         | Polyclonal             |

## Additional Information

---

|                           |   |
|---------------------------|---|
| <b>Other Names</b>        | ITGB4; Integrin beta-4; GP150; CD antigen CD104   |
| <b>Dilution</b>           | WB~Western Blot: 1/500 - 1/2000. Immunohistochemistry: 1/100 - 1/300. ELISA: 1/20000. Not yet tested in other applications. IHC-P~N/A IF~1:50~200 ICC~N/A E~N/A |
| <b>Format</b>             | Liquid in PBS containing 50% glycerol, 0.5% BSA and 0.09% (W/V) sodium azide.   |
| <b>Storage Conditions</b> | -20°C   |

## Protein Information

---

### Background

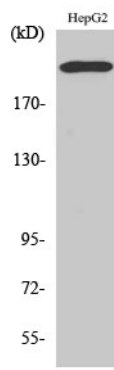
---

Integrin alpha-6/beta-4 is a receptor for laminin. Plays a critical structural role in the hemidesmosome of epithelial cells. Is required for the regulation of keratinocyte polarity and motility. ITGA6:ITGB4 binds to NRG1 (via EGF domain) and this binding is essential for NRG1-ERBB signaling (PubMed:[20682778](#)). ITGA6:ITGB4 binds to IGF1 and this binding is essential for IGF1 signaling (PubMed:[22351760](#)). ITGA6:ITGB4 binds to IGF2 and this binding is essential for IGF2 signaling (PubMed:[28873464](#)).

### Images

---

Western Blot analysis of various cells using Integrin  $\beta$ 4 Polyclonal Antibody



Please note: All products are 'FOR RESEARCH USE ONLY. NOT FOR USE IN DIAGNOSTIC OR THERAPEUTIC PROCEDURES'.