

# IL-3R $\beta$ Polyclonal Antibody

Catalog # AP70516

## Product Information

---

<b>Application</b>	WB, IHC-P
<b>Primary Accession</b>	<a href="#">P32927</a>
<b>Reactivity</b>	Human, Mouse, Rat
<b>Host</b>	Rabbit
<b>Clonality</b>	Polyclonal
<b>Calculated MW</b>	97336

## Additional Information

---

<b>Gene ID</b>	1439
<b>Other Names</b>	CSF2RB; IL3RB; IL5RB; Cytokine receptor common subunit beta; CDw131; GM-CSF/IL-3/IL-5 receptor common beta subunit; CD antigen CD131
<b>Dilution</b>	WB--Western Blot: 1/500 - 1/2000. Immunohistochemistry: 1/100 - 1/300. ELISA: 1/5000. Not yet tested in other applications. IHC-P--Western Blot: 1/500 - 1/2000. Immunohistochemistry: 1/100 - 1/300. ELISA: 1/5000. Not yet tested in other applications.
<b>Format</b>	Liquid in PBS containing 50% glycerol, 0.5% BSA and 0.09% (W/V) sodium azide.
<b>Storage Conditions</b>	-20°C

## Protein Information

---

<b>Name</b>	CSF2RB
<b>Synonyms</b>	IL3RB, IL5RB
<b>Function</b>	Cell surface receptor that plays a role in immune response and controls the production and differentiation of hematopoietic progenitor cells into lineage-restricted cells. Acts by forming an heterodimeric receptor through interaction with different partners such as IL3RA, IL5RA or CSF2RA (PubMed: <a href="#">1495999</a> ). In turn, participates in various signaling pathways including interleukin-3, interleukin-5 and granulocyte-macrophage colony-stimulating factor/CSF2 pathways. In unstimulated conditions, interacts constitutively with JAK1 and ligand binding leads to JAK1 stimulation and subsequent activation of the JAK- STAT pathway (PubMed: <a href="#">9516124</a> ).
<b>Cellular Location</b>	Membrane; Single-pass type I membrane protein.

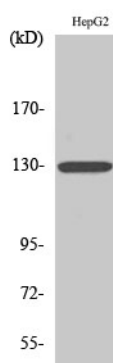
## Background

---

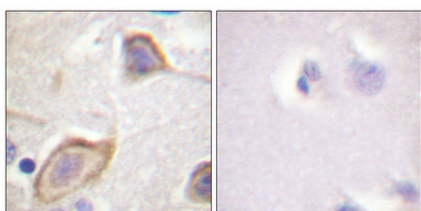
High affinity receptor for interleukin-3, interleukin-5 and granulocyte-macrophage colony-stimulating factor.

## Images

---



Western Blot analysis of various cells using IL-3R $\beta$  Polyclonal Antibody



Immunohistochemical analysis of paraffin-embedded Human brain. Antibody was diluted at 1:100(4°, overnight). High-pressure and temperature Tris-EDTA, pH8.0 was used for antigen retrieval. Negative control (right) obtained from antibody was pre-absorbed by immunogen peptide.

Please note: All products are 'FOR RESEARCH USE ONLY. NOT FOR USE IN DIAGNOSTIC OR THERAPEUTIC PROCEDURES'.