

Histone 1.0 Polyclonal Antibody

Catalog # AP70327

Product Information

Application	WB, IHC-P, IF, ICC, E
Primary Accession	P07305
Reactivity	Human, Rat, Mouse
Host	Rabbit
Clonality	Polyclonal
Calculated MW	20863

Additional Information

Gene ID	3005
Other Names	H1F0; H1FV; Histone H1.0; Histone H1'; Histone H1(0)
Dilution	WB~~Western Blot: 1/500 - 1/2000. Immunohistochemistry: 1/100 - 1/300. ELISA: 1/40000. Not yet tested in other applications. IHC-P~~N/A IF~~1:50~200 ICC~~N/A E~~N/A
Format	Liquid in PBS containing 50% glycerol, 0.5% BSA and 0.09% (W/V) sodium azide.
Storage Conditions	-20°C

Protein Information

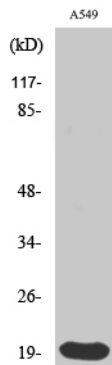
Name	H1-0 (HGNC:4714)
Function	Histone H1 protein binds to linker DNA between nucleosomes forming the macromolecular structure known as the chromatin fiber (PubMed: 33238161). Histones H1 are necessary for the condensation of nucleosome chains into higher-order structured fibers and promote formation of the H3K27me3 mark by the PRC2/EED-EZH2 complex (PubMed: 33238161). The histones H1.0 are found in cells that are in terminal stages of differentiation or that have low rates of cell division (PubMed: 7374750).
Cellular Location	Nucleus {ECO:0000255 PROSITE-ProRule:PRU00837, ECO:0000269 PubMed:18993075}. Nucleus, nucleolus. Chromosome {ECO:0000255 PROSITE- ProRule:PRU00837, ECO:0000269 PubMed:18993075, ECO:0000269 PubMed:25645921, ECO:0000269 PubMed:38530350} Note=Enriched at nucleolus-associated DNA repeats and chromatin domains (PubMed:25645921). During mitosis, it appears in the vicinity of condensed chromosomes (PubMed:18993075). The RNA edited version has been localized to nuclear speckles (PubMed:18993075). Compartmented to other H1 histones, shows a less

pronounced peripheral nuclear localization (PubMed:38530350).

Background

Histones H1 are necessary for the condensation of nucleosome chains into higher-order structures. The H1F0 histones are found in cells that are in terminal stages of differentiation or that have low rates of cell division.

Images



Western Blot analysis of various cells using Histone 1.0 Polyclonal Antibody diluted at 1 : 2000

Please note: All products are 'FOR RESEARCH USE ONLY. NOT FOR USE IN DIAGNOSTIC OR THERAPEUTIC PROCEDURES'.