

GUSBP1 Polyclonal Antibody

Catalog # AP70272

Product Information

Application	WB
Primary Accession	Q15486
Reactivity	Human
Host	Rabbit
Clonality	Polyclonal
Calculated MW	15381

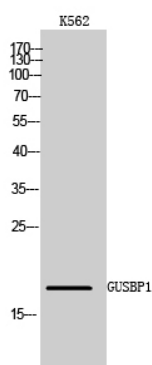
Additional Information

Other Names	GUSBP1; SMA3; Putative beta-glucuronidase-like protein SMA3
Dilution	WB~Western Blot: 1/500 - 1/2000. ELISA: 1/40000. Not yet tested in other applications.
Format	Liquid in PBS containing 50% glycerol, 0.5% BSA and 0.09% (W/V) sodium azide.
Storage Conditions	-20°C

Protein Information

Name	GUSBP1
Synonyms	SMA3
Tissue Location	Ubiquitous.

Images



Western Blot analysis of K562 cells using GUSBP1 Polyclonal Antibody

Please note: All products are 'FOR RESEARCH USE ONLY. NOT FOR USE IN DIAGNOSTIC OR THERAPEUTIC PROCEDURES'.