

GPR62 Polyclonal Antibody

Catalog # AP70210

Product Information

Application	WB
Primary Accession	Q9BZJ7
Reactivity	Human
Host	Rabbit
Clonality	Polyclonal
Calculated MW	37614

Additional Information

Gene ID	118442
Other Names	GPR62; Probable G-protein coupled receptor 62; G-protein coupled receptor GPCR8; hGPCR8; G-protein coupled receptor KPG_005
Dilution	WB~~Western Blot: 1/500 - 1/2000. ELISA: 1/20000. Not yet tested in other applications.
Format	Liquid in PBS containing 50% glycerol, 0.5% BSA and 0.09% (W/V) sodium azide.
Storage Conditions	-20°C

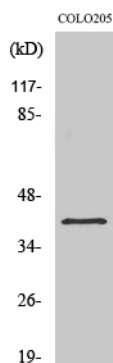
Protein Information

Name	GPR62
Function	Orphan G-protein coupled receptor. Constitutively activates the G(q/11)/inositol phosphate and the G(s)-alpha/cAMP signaling pathways (PubMed: 28827538). Has spontaneous activity for beta-arrestin recruitment (PubMed: 28827538). Shows a reciprocal modulation of signaling functions with the melatonin receptor MTNR1B most likely through receptor heteromerization (PubMed: 28827538).
Cellular Location	Cell membrane; Multi-pass membrane protein. Endosome membrane; Multi-pass membrane protein. Note=Colocalizes with ARRB2 in the endosome (PubMed: 28827538).
Tissue Location	Expressed in brain; detected in the basal forebrain, frontal cortex, caudate, putamen, thalamus and hippocampus

Background

Orphan G-protein coupled receptor. Constitutively activates the G(q/11)/inositol phosphate and the G(s)-alpha/cAMP signaling pathways (PubMed:[28827538](#)). Has spontaneous activity for beta-arrestin recruitment (PubMed:[28827538](#)). Shows a reciprocal modulation of signaling functions with the melatonin receptor MTNR1B most likely through receptor heteromerization (PubMed:[28827538](#)).

Images



Western Blot analysis of various cells using GPR62 Polyclonal Antibody

Please note: All products are 'FOR RESEARCH USE ONLY. NOT FOR USE IN DIAGNOSTIC OR THERAPEUTIC PROCEDURES'.