

# GPR38 Polyclonal Antibody

Catalog # AP70201

## Product Information

---

<b>Application</b>	WB, E
<b>Primary Accession</b>	<a href="#">O43193</a>
<b>Reactivity</b>	Human, Rat, Mouse
<b>Host</b>	Rabbit
<b>Clonality</b>	Polyclonal
<b>Calculated MW</b>	45344

## Additional Information

---

<b>Gene ID</b>	2862
<b>Other Names</b>	MLNR; GPR38; MTLR; MTLR1; Motilin receptor; G-protein coupled receptor 38
<b>Dilution</b>	WB~~Western Blot: 1/500 - 1/2000. ELISA: 1/20000. Not yet tested in other applications. E~~N/A
<b>Format</b>	Liquid in PBS containing 50% glycerol, 0.5% BSA and 0.09% (W/V) sodium azide.
<b>Storage Conditions</b>	-20°C

## Protein Information

---

<b>Name</b>	MLNR
<b>Synonyms</b>	GPR38, MTLR, MTLR1
<b>Function</b>	Receptor for motilin.
<b>Cellular Location</b>	Cell membrane; Multi-pass membrane protein.
<b>Tissue Location</b>	Expressed only in thyroid, stomach, and bone marrow

## Background

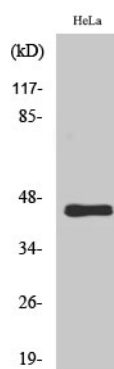
---

Receptor for motilin.

## Images

---

Western Blot analysis of various cells using GPR38



## Polyclonal Antibody

Please note: All products are 'FOR RESEARCH USE ONLY. NOT FOR USE IN DIAGNOSTIC OR THERAPEUTIC PROCEDURES'.