

GPR19 Polyclonal Antibody

Catalog # AP70190

Product Information

Application	WB, IHC-P, IF
Primary Accession	Q15760
Reactivity	Human, Mouse, Rat
Host	Rabbit
Clonality	Polyclonal
Calculated MW	47687

Additional Information

Gene ID	2842
Other Names	GPR19; Probable G-protein coupled receptor 19; GPR-NGA
Dilution	WB~~Western Blot: 1/500 - 1/2000. Immunohistochemistry: 1/100 - 1/300. Immunofluorescence: 1/200 - 1/1000. ELISA: 1/5000. Not yet tested in other applications. IHC-P~~N/A IF~~1:50~200
Format	Liquid in PBS containing 50% glycerol, 0.5% BSA and 0.09% (W/V) sodium azide.
Storage Conditions	-20°C

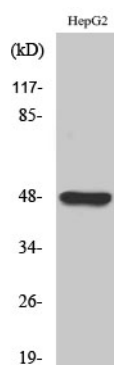
Protein Information

Name	GPR19
Function	G-protein coupled receptor that plays a role in the regulation of circadian rhythms and energy metabolism. Participates in maintaining proper circadian gene expression in the suprachiasmatic nucleus (SCN), the locus of the master circadian clock in the brain (By similarity). May function as a coordinator of aging-associated metabolic dysfunction, stress response, DNA integrity management, and eventual senescence (PubMed: 37239845). Upon binding to adropin, modulates mitochondrial energy metabolism via the p44/42-PDK4 signaling pathway, influencing pyruvate dehydrogenase activity (By similarity).
Cellular Location	Cell membrane; Multi-pass membrane protein
Tissue Location	Abundant expression in the brain.

Background

Orphan receptor.

Images



Western Blot analysis of various cells using GPR19 Polyclonal Antibody cells nucleus extracted by Minute TM Cytoplasmic and Nuclear Fractionation kit (SC-003, Inventbiotech, MN, USA).

Please note: All products are 'FOR RESEARCH USE ONLY. NOT FOR USE IN DIAGNOSTIC OR THERAPEUTIC PROCEDURES'.