

GPR171 Polyclonal Antibody

Catalog # AP70176

Product Information

Application	WB, IF, ICC, E
Primary Accession	O14626
Reactivity	Human, Rat, Mouse
Host	Rabbit
Clonality	Polyclonal
Calculated MW	36754

Additional Information

Gene ID	29909
Other Names	GPR171; H963; Probable G-protein coupled receptor 171; G-protein coupled receptor H963
Dilution	WB--Western Blot: 1/500 - 1/2000. Immunofluorescence: 1/200 - 1/1000. ELISA: 1/10000. Not yet tested in other applications. IF--1:50~200 ICC--N/A E--N/A
Format	Liquid in PBS containing 50% glycerol, 0.5% BSA and 0.09% (W/V) sodium azide.
Storage Conditions	-20°C

Protein Information

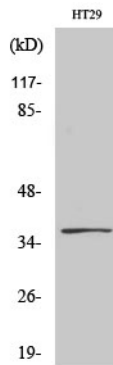
Name	GPR171 (HGNC:30057)
Synonyms	H963
Function	G-protein coupled receptor for Big LEN, a 16-amino acid neuropeptide produced from the precursor protein, proSAAS (encoded by PCSK1N). Acts through a G(i)-alpha-mediated pathway in response to Big LEN. Big LEN-GPR171 system plays an important role in regulating feeding and metabolism. Also plays a role in modulating fear and anxiety-like behaviors in the basolateral amygdala. Big LEN-GPR171 modulates the mu-type opioid receptor signaling and antinociception (By similarity). Acts as a negative regulator T cell function (PubMed: 34615877).
Cellular Location	Cell membrane {ECO:0000250 UniProtKB:Q8BG55}; Multi-pass membrane protein. Note=Colocalized with GPR83 in the paraventricular nucleus. {ECO:0000250 UniProtKB:Q8BG55}
Tissue Location	Expressed in both T-cell subsets and natural killer cells, while it is

undetectable in B cells or CD14(+) monocytes Expressed in peripheral blood mononuclear cells (PBMC) and Jurkat cells (at protein level).

Background

Orphan receptor.

Images



Western Blot analysis of various cells using GPR171 Polyclonal Antibody

Citations

- [The GPR171 pathway suppresses T cell activation and limits antitumor immunity.](#)

Please note: All products are 'FOR RESEARCH USE ONLY. NOT FOR USE IN DIAGNOSTIC OR THERAPEUTIC PROCEDURES'.