

GPR100 Polyclonal Antibody

Catalog # AP70130

Product Information

Application	WB, IF
Primary Accession	Q8TDU9
Reactivity	Human
Host	Rabbit
Clonality	Polyclonal
Calculated MW	41141

Additional Information

Gene ID	339403
Other Names	RXFP4; GPR100; RLN3R2; Relaxin-3 receptor 2; RLN3 receptor 2; G-protein coupled receptor 100; G-protein coupled receptor GPCR142; Insulin-like peptide INSL5 receptor; Relaxin family peptide receptor 4
Dilution	WB~~Western Blot: 1/500 - 1/2000. Immunofluorescence: 1/200 - 1/1000. ELISA: 1/20000. Not yet tested in other applications. IF~~1:50~200
Format	Liquid in PBS containing 50% glycerol, 0.5% BSA and 0.09% (W/V) sodium azide.
Storage Conditions	-20°C

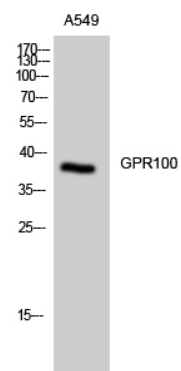
Protein Information

Name	RXFP4
Synonyms	GPCR142, GPR100, RLN3R2
Function	High affinity receptor for INSL5. Also acts as a receptor for RLN3/relaxin-3, as well as bradykinin and kallidin. Binding of the ligand inhibit cAMP accumulation.
Cellular Location	Cell membrane; Multi-pass membrane protein.
Tissue Location	Expressed in a broader range of tissues including brain, kidney, testis, thymus, placenta, prostate, salivary gland, thyroid and colon.

Background

High affinity receptor for INSL5. Also acts as receptor for RLN3/relaxin-3, as well as bradykinin and kallidin. Binding of the ligand inhibit cAMP accumulation.

Images



Western Blot analysis of A549 cells using GPR100 Polyclonal Antibody

Please note: All products are 'FOR RESEARCH USE ONLY. NOT FOR USE IN DIAGNOSTIC OR THERAPEUTIC PROCEDURES'.