

Glycogen Synthase 1 Polyclonal Antibody

Catalog # AP70115

Product Information

Application	WB, IHC-P
Primary Accession	P13807
Reactivity	Human, Mouse, Rat
Host	Rabbit
Clonality	Polyclonal
Calculated MW	83786

Additional Information

Gene ID	2997
Other Names	GYS1; GYS; Glycogen [starch] synthase; muscle
Dilution	WB~~Western Blot: 1/500 - 1/2000. ELISA: 1/10000. Not yet tested in other applications. IHC-P~~N/A
Format	Liquid in PBS containing 50% glycerol, 0.5% BSA and 0.09% (W/V) sodium azide.
Storage Conditions	-20°C

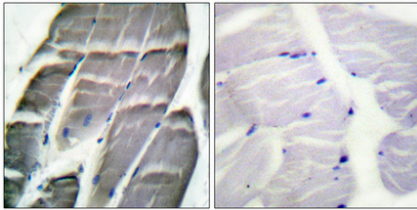
Protein Information

Name	GYS1 (HGNC:4706)
Synonyms	GYS
Function	Glycogen synthase participates in the glycogen biosynthetic process along with glycogenin and glycogen branching enzyme. Extends the primer composed of a few glucose units formed by glycogenin by adding new glucose units to it. In this context, glycogen synthase transfers the glycosyl residue from UDP-Glc to the non-reducing end of alpha-1,4-glucan.
Tissue Location	Expressed in skeletal muscle and most other cell types where glycogen is present.

Background

Transfers the glycosyl residue from UDP-Glc to the non- reducing end of alpha-1,4-glucan.

Images



Immunohistochemical analysis of paraffin-embedded Human skeletal muscle. Antibody was diluted at 1:100(4°,overnight). High-pressure and temperature Tris-EDTA,pH8.0 was used for antigen retrieval. Negative contrl (right) obtaned from antibody was pre-absorbed by immunogen peptide.

Please note: All products are 'FOR RESEARCH USE ONLY. NOT FOR USE IN DIAGNOSTIC OR THERAPEUTIC PROCEDURES'.