

Glut3 Polyclonal Antibody

Catalog # AP70112

Product Information

Application	WB, IHC-P, IF, ICC, E
Primary Accession	P11169
Reactivity	Human, Rat, Mouse
Host	Rabbit
Clonality	Polyclonal

Additional Information

Other Names	SLC2A3; GLUT3; Solute carrier family 2; facilitated glucose transporter member 3; Glucose transporter type 3, brain; GLUT-3
Dilution	WB--Western Blot: 1/500 - 1/2000. Immunohistochemistry: 1/100 - 1/300. ELISA: 1/10000. Not yet tested in other applications. IHC-P--N/A IF--1:50~200 ICC--N/A E--N/A
Format	Liquid in PBS containing 50% glycerol, 0.5% BSA and 0.09% (W/V) sodium azide.
Storage Conditions	-20°C

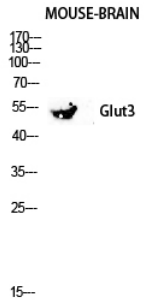
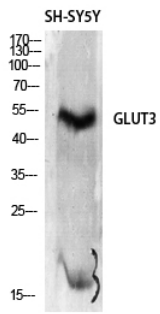
Protein Information

Background

Facilitative glucose transporter that can also mediate the uptake of various other monosaccharides across the cell membrane (PubMed:[9477959](#), PubMed:[26176916](#)). Mediates the uptake of glucose, 2-deoxyglucose, galactose, mannose, xylose and fucose, and probably also dehydroascorbate (PubMed:[9477959](#), PubMed:[26176916](#)). Does not mediate fructose transport (PubMed:[9477959](#), PubMed:[26176916](#)).

Images

Western Blot analysis of SH-SY5Y cells using Glut3 Polyclonal Antibody diluted at 1 : 2000



Western blot analysis of Mouse-kidney lysis using Glut3 antibody. Antibody was diluted at 1:2000

Please note: All products are 'FOR RESEARCH USE ONLY. NOT FOR USE IN DIAGNOSTIC OR THERAPEUTIC PROCEDURES'.