

GluR- δ 2 Polyclonal Antibody

Catalog # AP70110

Product Information

Application	WB, IF
Primary Accession	O43424
Reactivity	Human, Mouse, Rat
Host	Rabbit
Clonality	Polyclonal
Calculated MW	113356

Additional Information

Gene ID	2895
Other Names	GRID2; GLURD2; Glutamate receptor delta-2 subunit; GluR delta-2 subunit
Dilution	WB~~Western Blot: 1/500 - 1/2000. Immunofluorescence: 1/200 - 1/1000. ELISA: 1/20000. Not yet tested in other applications. IF~~1:50~200
Format	Liquid in PBS containing 50% glycerol, 0.5% BSA and 0.09% (W/V) sodium azide.
Storage Conditions	-20°C

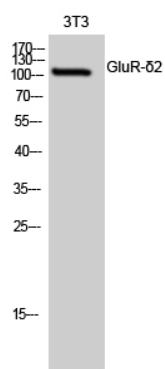
Protein Information

Name	GRID2
Synonyms	GLURD2
Function	Member of the ionotropic glutamate receptor family, which plays a crucial role in synaptic organization and signal transduction in the central nervous system. Although it shares structural features with ionotropic glutamate receptors, does not bind glutamate as a primary ligand (PubMed: 34936451). Promotes synaptogenesis and mediates the D-Serine-dependent long term depression signals and AMPA receptor endocytosis of cerebellar parallel fiber-Purkinje cell (PF-PC) synapses through the NRX1B-CBLN1-GRID2 triad complex (PubMed: 27418511). In the presence of neurexins and cerebellins, forms cation-selective channels that are proposed to be gated by glycine and D-serine (PubMed: 34936451). However, recent research disputes this ligand-gated cation channel activity (PubMed: 39052831). Cation-selective ion channel activity can be triggered by GRM1 in Purkinje cells (PubMed: 24357660 , PubMed: 27276689).
Cellular Location	Postsynaptic cell membrane {ECO:0000250 UniProtKB:Q61625}; Multi-pass membrane protein

Background

Receptor for glutamate. L-glutamate acts as an excitatory neurotransmitter at many synapses in the central nervous system. The postsynaptic actions of Glu are mediated by a variety of receptors that are named according to their selective agonists. Promotes synaptogenesis and mediates the D-Serine- dependent long term depression signals and AMPA receptor endocytosis of cerebellar parallel fiber-Purkinje cell (PF-PC) synapses through the beta-NRX1-CBLN1-GRID2 triad complex (PubMed:[27418511](#)).

Images



Western Blot analysis of 3T3 cells using GluR-δ2 Polyclonal Antibody

Please note: All products are 'FOR RESEARCH USE ONLY. NOT FOR USE IN DIAGNOSTIC OR THERAPEUTIC PROCEDURES'.