

GIPR Polyclonal Antibody

Catalog # AP70089

Product Information

Application	WB, IHC-P, IF, ICC, E
Primary Accession	P48546
Reactivity	Human, Rat, Mouse
Host	Rabbit
Clonality	Polyclonal
Calculated MW	53157

Additional Information

Gene ID	2696
Other Names	GIPR; Gastric inhibitory polypeptide receptor; GIP-R; Glucose-dependent insulintropic polypeptide receptor
Dilution	WB~~Western Blot: 1/500 - 1/2000. Immunohistochemistry: 1/100 - 1/300. Immunofluorescence: 1/200 - 1/1000. ELISA: 1/20000. Not yet tested in other applications. IHC-P~~N/A IF~~1:50~200 ICC~~N/A E~~N/A
Format	Liquid in PBS containing 50% glycerol, 0.5% BSA and 0.09% (W/V) sodium azide.
Storage Conditions	-20°C

Protein Information

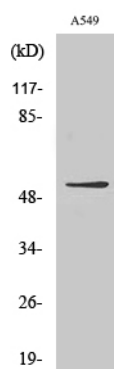
Name	GIPR
Function	This is a receptor for GIP. The activity of this receptor is mediated by G proteins which activate adenylyl cyclase.
Cellular Location	Cell membrane; Multi-pass membrane protein

Background

This is a receptor for GIP. The activity of this receptor is mediated by G proteins which activate adenylyl cyclase.

Images

Western Blot analysis of various cells using GIPR



Polyclonal Antibody

Please note: All products are 'FOR RESEARCH USE ONLY. NOT FOR USE IN DIAGNOSTIC OR THERAPEUTIC PROCEDURES'.