

GCS- β -1 Polyclonal Antibody

Catalog # AP70069

Product Information

Application	WB, IHC-P
Primary Accession	Q02153
Reactivity	Human, Mouse, Rat
Host	Rabbit
Clonality	Polyclonal
Calculated MW	70514

Additional Information

Gene ID	2983
Other Names	GUCY1B3; GUC1B3; GUCSB3; GUCY1B1; Guanylate cyclase soluble subunit beta-1; GCS-beta-1; Guanylate cyclase soluble subunit beta-3; GCS-beta-3; Soluble guanylate cyclase small subunit
Dilution	WB~~Western Blot: 1/500 - 1/2000. Immunohistochemistry: 1/100 - 1/300. ELISA: 1/5000. Not yet tested in other applications. IHC-P~~N/A
Format	Liquid in PBS containing 50% glycerol, 0.5% BSA and 0.09% (W/V) sodium azide.
Storage Conditions	-20°C

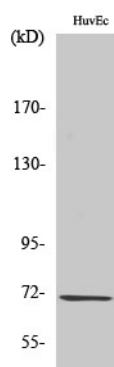
Protein Information

Name	GUCY1B1 (HGNC:4687)
Function	Mediates responses to nitric oxide (NO) by catalyzing the biosynthesis of the signaling molecule cGMP.
Cellular Location	Cytoplasm {ECO:0000250 UniProtKB:P16068}.
Tissue Location	Detected in brain cortex and cerebellum (at protein level).

Background

Mediates responses to nitric oxide (NO) by catalyzing the biosynthesis of the signaling molecule cGMP.

Images



Western Blot analysis of various cells using GCS- β -1 Polyclonal Antibody

Please note: All products are 'FOR RESEARCH USE ONLY. NOT FOR USE IN DIAGNOSTIC OR THERAPEUTIC PROCEDURES'.