

# GALK1 Polyclonal Antibody

Catalog # AP70025

## Product Information

---

<b>Application</b>	WB, IHC-P, IF
<b>Primary Accession</b>	<a href="#">P51570</a>
<b>Reactivity</b>	Human, Mouse, Rat
<b>Host</b>	Rabbit
<b>Clonality</b>	Polyclonal
<b>Calculated MW</b>	42272

## Additional Information

---

<b>Gene ID</b>	2584
<b>Other Names</b>	GALK1; GALK; Galactokinase; Galactose kinase
<b>Dilution</b>	WB~~Western Blot: 1/500 - 1/2000. Immunohistochemistry: 1/100 - 1/300. Immunofluorescence: 1/200 - 1/1000. ELISA: 1/10000. Not yet tested in other applications. IHC-P~~N/A IF~~1:50~200
<b>Format</b>	Liquid in PBS containing 50% glycerol, 0.5% BSA and 0.09% (W/V) sodium azide.
<b>Storage Conditions</b>	-20°C

## Protein Information

---

<b>Name</b>	GALK1 ( <a href="#">HGNC:4118</a> )
<b>Synonyms</b>	GALK
<b>Function</b>	Catalyzes the transfer of a phosphate from ATP to alpha-D- galactose and participates in the first committed step in the catabolism of galactose.

## Background

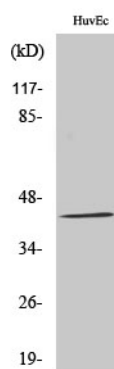
---

Major enzyme for galactose metabolism.

## Images

---

Western Blot analysis of various cells using GALK1  
Polyclonal Antibody diluted at 1 : 1000



Please note: All products are 'FOR RESEARCH USE ONLY. NOT FOR USE IN DIAGNOSTIC OR THERAPEUTIC PROCEDURES'.