

Galectin-4 Polyclonal Antibody

Catalog # AP70021

Product Information

Application	WB, IHC-P, IF, ICC, E
Primary Accession	P56470
Reactivity	Human, Rat, Mouse
Host	Rabbit
Clonality	Polyclonal
Calculated MW	35941

Additional Information

Gene ID	3960
Other Names	LGALS4; Galectin-4; Gal-4; Antigen NY-CO-27; L-36 lactose-binding protein; L36LBP; Lactose-binding lectin 4
Dilution	WB~~Western Blot: 1/500 - 1/2000. Immunohistochemistry: 1/100 - 1/300. ELISA: 1/20000. Not yet tested in other applications. IHC-P~~N/A IF~~1:50~200 ICC~~N/A E~~N/A
Format	Liquid in PBS containing 50% glycerol, 0.5% BSA and 0.09% (W/V) sodium azide.
Storage Conditions	-20°C

Protein Information

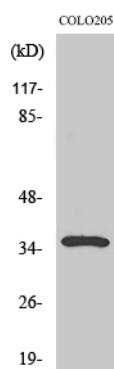
Name	LGALS4
Function	Galectin that binds lactose and a related range of sugars. May be involved in the assembly of adherens junctions.

Background

Galectin that binds lactose and a related range of sugars. May be involved in the assembly of adherens junctions.

Images

Western Blot analysis of various cells using Galectin-4 Polyclonal Antibody



Please note: All products are 'FOR RESEARCH USE ONLY. NOT FOR USE IN DIAGNOSTIC OR THERAPEUTIC PROCEDURES'.