

# FSHR Polyclonal Antibody

Catalog # AP69978

## Product Information

---

<b>Application</b>	WB, IHC-P, IF, ICC, E
<b>Primary Accession</b>	<a href="#">P23945</a>
<b>Reactivity</b>	Human, Mouse, Rat
<b>Host</b>	Rabbit
<b>Clonality</b>	Polyclonal
<b>Calculated MW</b>	78238

## Additional Information

---

<b>Gene ID</b>	2492
<b>Other Names</b>	FSHR; LGR1; Follicle-stimulating hormone receptor; FSH-R; Follitropin receptor
<b>Dilution</b>	WB~~IHC-p: 100-300.Western Blot: 1/500 - 1/2000. Immunofluorescence: 1/200 - 1/1000. ELISA: 1/5000. Not yet tested in other applications. IHC-P~~IHC-p: 100-300.Western Blot: 1/500 - 1/2000. Immunofluorescence: 1/200 - 1/1000. ELISA: 1/5000. Not yet tested in other applications. IF~~1:50~200 ICC~~N/A E~~N/A
<b>Format</b>	Liquid in PBS containing 50% glycerol, 0.5% BSA and 0.09% (W/V) sodium azide.
<b>Storage Conditions</b>	-20°C

## Protein Information

---

<b>Name</b>	FSHR
<b>Synonyms</b>	LGR1
<b>Function</b>	G protein-coupled receptor for follitropin, the follicle- stimulating hormone (PubMed: <a href="#">11847099</a> , PubMed: <a href="#">24058690</a> , PubMed: <a href="#">24692546</a> ). Through cAMP production activates the downstream PI3K-AKT and ERK1/ERK2 signaling pathways (PubMed: <a href="#">24058690</a> ).
<b>Cellular Location</b>	Cell membrane; Multi-pass membrane protein
<b>Tissue Location</b>	Sertoli cells and ovarian granulosa cells.

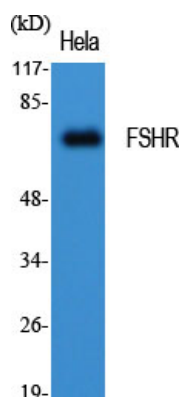
## Background

---

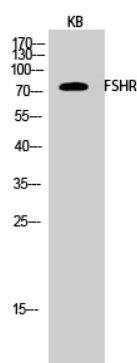
G protein-coupled receptor for follitropin, the follicle-stimulating hormone (PubMed: [11847099](#),

PubMed:[24058690](#), PubMed:[24692546](#)). Through cAMP production activates the downstream PI3K-AKT and ERK1/ERK2 signaling pathways (PubMed:[24058690](#)).

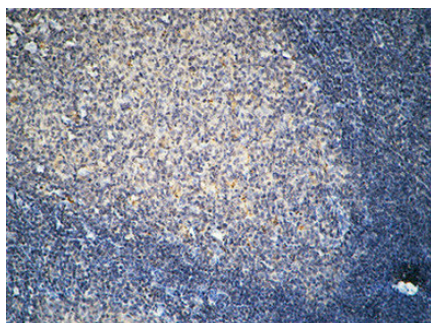
## Images



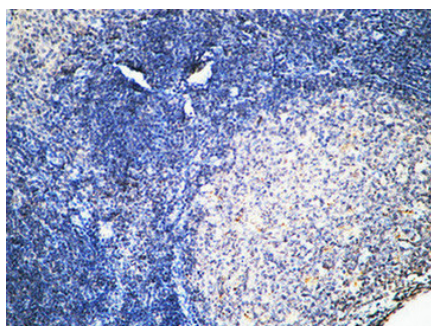
Western Blot analysis of various cells using FSHR Polyclonal Antibody diluted at 1 : 1000



Western Blot analysis of KB cells using FSHR Polyclonal Antibody diluted at 1 : 1000

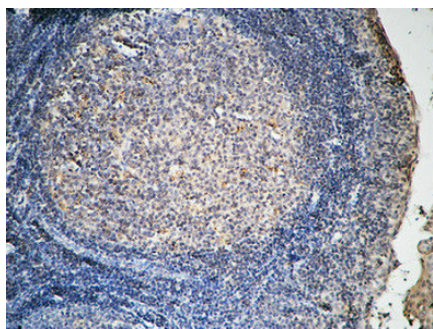


Immunohistochemical analysis of paraffin-embedded Human Amygdala. 1, Antibody was diluted at 1:100(4°,overnight). 2, High-pressure and temperature EDTA, pH8.0 was used for antigen retrieval. 3,Secondary antibody was diluted at 1:200(room temperature, 30min).



Immunohistochemical analysis of paraffin-embedded Human Amygdala. 1, Antibody was diluted at 1:100(4°,overnight). 2, High-pressure and temperature EDTA, pH8.0 was used for antigen retrieval. 3,Secondary antibody was diluted at 1:200(room temperature, 30min).

Immunohistochemical analysis of paraffin-embedded Human Amygdala. 1, Antibody was diluted at 1:100(4°,overnight). 2, High-pressure and temperature EDTA, pH8.0 was used for antigen retrieval. 3,Secondary antibody was diluted at 1:200(room temperature, 30min).



Please note: All products are 'FOR RESEARCH USE ONLY. NOT FOR USE IN DIAGNOSTIC OR THERAPEUTIC PROCEDURES'.