

Epsin 2 Polyclonal Antibody

Catalog # AP69785

Product Information

Application	WB, IHC-P, IF, ICC, E
Primary Accession	O95208
Reactivity	Human, Mouse, Rat
Host	Rabbit
Clonality	Polyclonal
Calculated MW	68482

Additional Information

Gene ID	22905
Other Names	EPN2; KIAA1065; Epsin-2; EPS-15-interacting protein 2
Dilution	WB~~Western Blot: 1/500 - 1/2000. Immunohistochemistry: 1/100 - 1/300. ELISA: 1/20000. Not yet tested in other applications. IHC-P~~N/A IF~~1:50~200 ICC~~N/A E~~N/A
Format	Liquid in PBS containing 50% glycerol, 0.5% BSA and 0.09% (W/V) sodium azide.
Storage Conditions	-20°C

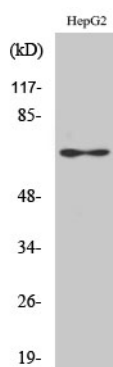
Protein Information

Name	EPN2
Synonyms	KIAA1065
Function	Plays a role in the formation of clathrin-coated invaginations and endocytosis.
Cellular Location	Cytoplasm. Cytoplasmic vesicle, clathrin-coated vesicle. Note=In punctate structures throughout the cell, associated with clathrin-coated vesicles, and particularly concentrated in the region of the Golgi complex
Tissue Location	Highest expression is found in brain. Detected at lower levels in lung and liver.

Background

Plays a role in the formation of clathrin-coated invaginations and endocytosis.

Images



Western Blot analysis of various cells using Epsin 2
Polyclonal Antibody diluted at 1 : 1000

Please note: All products are 'FOR RESEARCH USE ONLY. NOT FOR USE IN DIAGNOSTIC OR THERAPEUTIC PROCEDURES'.