

# Epsin 1 Polyclonal Antibody

Catalog # AP69784

## Product Information

---

<b>Application</b>	WB
<b>Primary Accession</b>	<a href="#">Q9Y6I3</a>
<b>Reactivity</b>	Human, Mouse, Rat
<b>Host</b>	Rabbit
<b>Clonality</b>	Polyclonal
<b>Calculated MW</b>	60293

## Additional Information

---

<b>Gene ID</b>	29924
<b>Other Names</b>	EPN1; Epsin-1; EH domain-binding mitotic phosphoprotein; EPS-15-interacting protein 1
<b>Dilution</b>	WB~~Western Blot: 1/500 - 1/2000. ELISA: 1/40000. Not yet tested in other applications.
<b>Format</b>	Liquid in PBS containing 50% glycerol, 0.5% BSA and 0.09% (W/V) sodium azide.
<b>Storage Conditions</b>	-20°C

## Protein Information

---

<b>Name</b>	EPN1
<b>Function</b>	Binds to membranes enriched in phosphatidylinositol 4,5- biphosphate (PtdIns(4,5)P2). Modifies membrane curvature and facilitates the formation of clathrin-coated invaginations (By similarity). Regulates receptor-mediated endocytosis (PubMed: <a href="#">10393179</a> , PubMed: <a href="#">10557078</a> ).
<b>Cellular Location</b>	Cytoplasm. Cell membrane; Peripheral membrane protein. Nucleus. Membrane, clathrin-coated pit Note=Associated with the cytoplasmic membrane at sites where clathrin- coated pits are forming. Colocalizes with clathrin and AP-2 in a punctate pattern on the plasma membrane. Detected in presynaptic nerve terminals and in Golgi stacks. May shuttle to the nucleus when associated with ZBTB16/ZNF145 (By similarity).

## Background

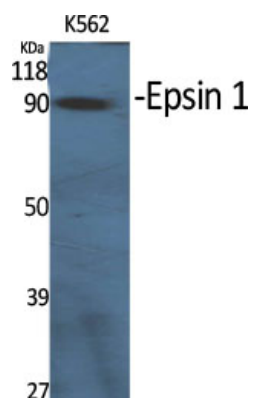
---

Binds to membranes enriched in phosphatidylinositol 4,5- biphosphate (PtdIns(4,5)P2). Modifies membrane curvature and facilitates the formation of clathrin-coated invaginations (By similarity). Regulates

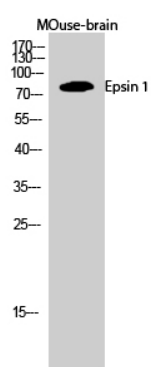
receptor-mediated endocytosis.

## Images

---



Western Blot analysis of various cells using Epsin 1  
Polyclonal Antibody diluted at 1 : 1000



Western Blot analysis of MOuse-brain cells using Epsin 1  
Polyclonal Antibody diluted at 1 : 1000

Please note: All products are 'FOR RESEARCH USE ONLY. NOT FOR USE IN DIAGNOSTIC OR THERAPEUTIC PROCEDURES'.