

Ephrin-B1/2 Polyclonal Antibody

Catalog # AP69778

Product Information

Application	WB, IHC-P, IF, ICC, E
Primary Accession	P98172 , P52799
Reactivity	Human, Mouse, Rat
Host	Rabbit
Clonality	Polyclonal
Calculated MW	38007

Additional Information

Gene ID	1947
Other Names	EFNB1; EFL3; EPLG2; LERK2; Ephrin-B1; EFL-3; ELK ligand; ELK-L; EPH-related receptor tyrosine kinase ligand 2; LERK-2; EFNB2; EPLG5; HTKL; LERK5; Ephrin-B2; EPH-related receptor tyrosine kinase ligand 5; LERK-5; HTK ligand; HTK-L
Dilution	WB~~Western Blot: 1/500 - 1/2000. Immunohistochemistry: 1/100 - 1/300. ELISA: 1/40000. Not yet tested in other applications. IHC-P~~N/A IF~~1:50~200 ICC~~N/A E~~N/A
Format	Liquid in PBS containing 50% glycerol, 0.5% BSA and 0.09% (W/V) sodium azide.
Storage Conditions	-20°C

Protein Information

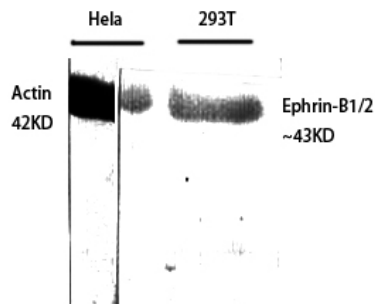
Name	EFNB1
Synonyms	EFL3, EPLG2, LERK2
Function	Cell surface transmembrane ligand for Eph receptors, a family of receptor tyrosine kinases which are crucial for migration, repulsion and adhesion during neuronal, vascular and epithelial development (PubMed: 7973638 , PubMed: 8070404). Binding to Eph receptors residing on adjacent cells leads to contact-dependent bidirectional signaling into neighboring cells (PubMed: 7973638 , PubMed: 8070404). Shows high affinity for the receptor tyrosine kinase EPHB1/ELK (PubMed: 7973638 , PubMed: 8070404). Can also bind EPHB2 and EPHB3 (PubMed: 8070404). Binds to, and induces collapse of, commissural axons/growth cones in vitro (By similarity). May play a role in constraining the orientation of longitudinally projecting axons (By similarity).
Cellular Location	Cell membrane; Single-pass type I membrane protein. Membrane raft.

Note=May recruit GRIP1 and GRIP2 to membrane raft domains [Ephrin-B1 intracellular domain]: Nucleus. Note=Colocalizes with ZHX2 in the nucleus. {ECO:0000250|UniProtKB:P52795}

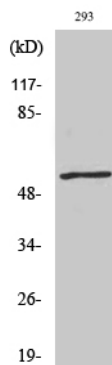
Tissue Location

Widely expressed (PubMed:7973638, PubMed:8070404). Detected in both neuronal and non-neuronal tissues (PubMed:7973638, PubMed:8070404). Seems to have particularly strong expression in retina, sciatic nerve, heart and spinal cord (PubMed:7973638)

Images



Western Blot analysis of various cells using Ephrin-B1/2 Polyclonal Antibody diluted at 1 : 500



Western Blot analysis of 293 cells using Ephrin-B1/2 Polyclonal Antibody diluted at 1 : 500

Please note: All products are 'FOR RESEARCH USE ONLY. NOT FOR USE IN DIAGNOSTIC OR THERAPEUTIC PROCEDURES'.