

Ephrin-A4 Polyclonal Antibody

Catalog # AP69775

Product Information

Application	WB
Primary Accession	P52798
Reactivity	Human, Mouse
Host	Rabbit
Clonality	Polyclonal
Calculated MW	22386

Additional Information

Gene ID	1945
Other Names	EFNA4; EPLG4; LERK4; Ephrin-A4; EPH-related receptor tyrosine kinase ligand 4; LERK-4
Dilution	WB~~Western Blot: 1/500 - 1/2000. ELISA: 1/40000. Not yet tested in other applications.
Format	Liquid in PBS containing 50% glycerol, 0.5% BSA and 0.09% (W/V) sodium azide.
Storage Conditions	-20°C

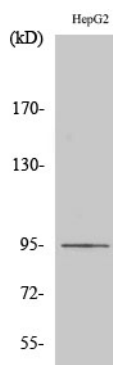
Protein Information

Name	EFNA4
Synonyms	EPLG4, LERK4
Function	Cell surface GPI-bound ligand for Eph receptors, a family of receptor tyrosine kinases which are crucial for migration, repulsion and adhesion during neuronal, vascular and epithelial development. Binds promiscuously Eph receptors residing on adjacent cells, leading to contact-dependent bidirectional signaling into neighboring cells. May play a role in the interaction between activated B-lymphocytes and dendritic cells in tonsils.
Cellular Location	[Isoform 1]: Cell membrane; Lipid-anchor, GPI- anchor
Tissue Location	Expressed in the adult spleen, lymph node, prostate, ovary, small intestine, and colon, and in fetal heart, lung, liver and kidney. Also detected in hematopoietic cell lines

Background

Cell surface GPI-bound ligand for Eph receptors, a family of receptor tyrosine kinases which are crucial for migration, repulsion and adhesion during neuronal, vascular and epithelial development. Binds promiscuously Eph receptors residing on adjacent cells, leading to contact-dependent bidirectional signaling into neighboring cells. May play a role in the interaction between activated B-lymphocytes and dendritic cells in tonsils.

Images



Western Blot analysis of various cells using Ephrin-A4
Polyclonal Antibody diluted at 1 : 500

Please note: All products are 'FOR RESEARCH USE ONLY. NOT FOR USE IN DIAGNOSTIC OR THERAPEUTIC PROCEDURES'.