

Emx1 Polyclonal Antibody

Catalog # AP69732

Product Information

Application	WB
Primary Accession	Q04741
Reactivity	Human, Mouse, Rat
Host	Rabbit
Clonality	Polyclonal
Calculated MW	31295

Additional Information

Gene ID	2016
Other Names	EMX1; Homeobox protein EMX1; Empty spiracles homolog 1; Empty spiracles-like protein 1
Dilution	WB~~Western Blot: 1/500 - 1/2000. ELISA: 1/40000. Not yet tested in other applications.
Format	Liquid in PBS containing 50% glycerol, 0.5% BSA and 0.09% (W/V) sodium azide.
Storage Conditions	-20°C

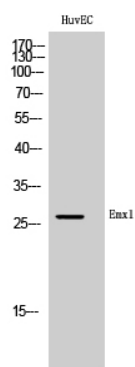
Protein Information

Name	EMX1 (HGNC:3340)
Function	Transcription factor, which in cooperation with EMX2, acts to generate the boundary between the roof and archipallium in the developing brain. May function in combinations with OTX1/2 to specify cell fates in the developing central nervous system.
Cellular Location	Nucleus {ECO:0000255 PROSITE-ProRule:PRU00108, ECO:0000269 PubMed:20887964}. Cytoplasm Note=Might be shuttling between the nucleus and the cytoplasm
Tissue Location	Cerebral cortex.

Background

Transcription factor, which in cooperation with EMX2, acts to generate the boundary between the roof and archipallium in the developing brain. May function in combinations with OTX1/2 to specify cell fates in the developing central nervous system.

Images



Western Blot analysis of HuvEC cells using Emx1 Polyclonal Antibody cells nucleus extracted by Minute TM Cytoplasmic and Nuclear Fractionation kit (SC-003, Inventbiotech, MN, USA).

Please note: All products are 'FOR RESEARCH USE ONLY. NOT FOR USE IN DIAGNOSTIC OR THERAPEUTIC PROCEDURES'.