

EDG-3 Polyclonal Antibody

Catalog # AP69646

Product Information

Application	WB, IF
Primary Accession	Q99500
Reactivity	Human
Host	Rabbit
Clonality	Polyclonal
Calculated MW	42250

Additional Information

Gene ID	1903
Other Names	S1PR3; EDG3; Sphingosine 1-phosphate receptor 3; S1P receptor 3; S1P3; Endothelial differentiation G-protein coupled receptor 3; Sphingosine 1-phosphate receptor Edg-3; S1P receptor Edg-3
Dilution	WB~~Western Blot: 1/500 - 1/2000. Immunofluorescence: 1/200 - 1/1000. ELISA: 1/5000. Not yet tested in other applications. IF~~1:50~200
Format	Liquid in PBS containing 50% glycerol, 0.5% BSA and 0.09% (W/V) sodium azide.
Storage Conditions	-20°C

Protein Information

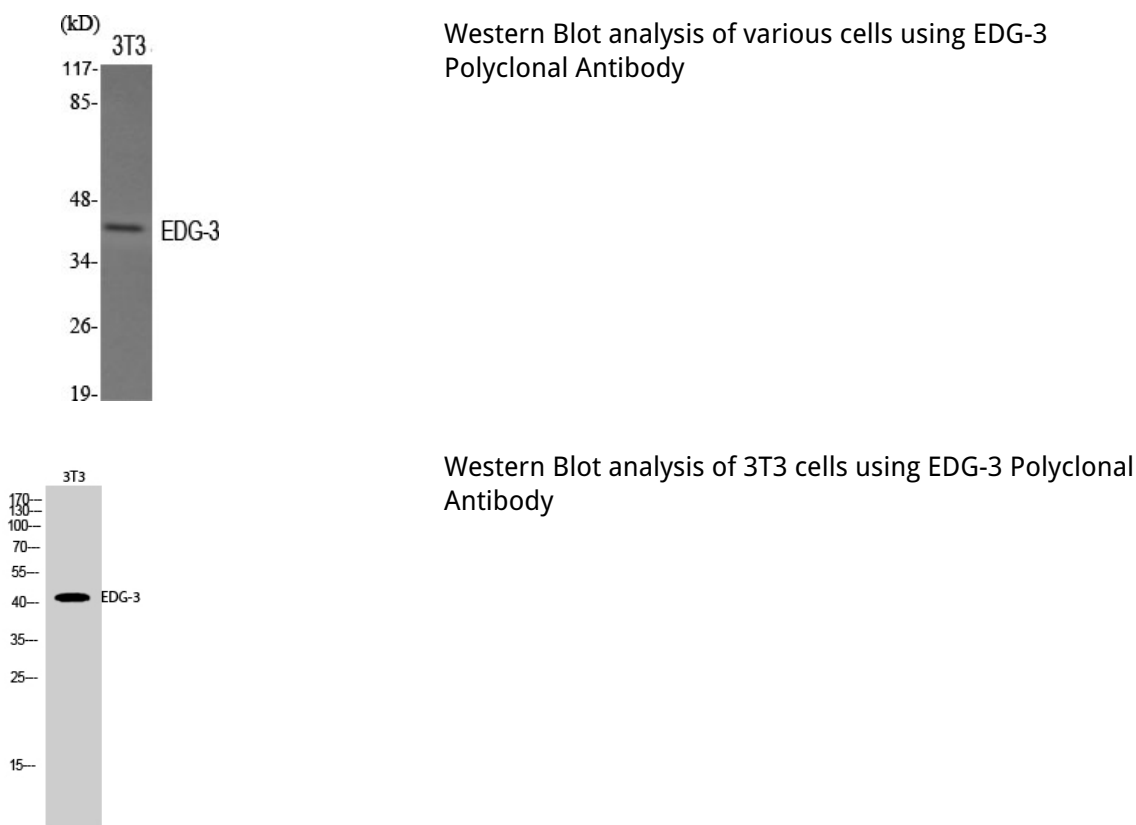
Name	S1PR3 (HGNC:3167)
Function	Receptor for the lysosphingolipid sphingosine 1-phosphate (S1P). S1P is a bioactive lysophospholipid that elicits diverse physiological effect on most types of cells and tissues. When expressed in rat HTC4 hepatoma cells, is capable of mediating S1P-induced cell proliferation and suppression of apoptosis.
Cellular Location	Cell membrane; Multi-pass membrane protein.
Tissue Location	Expressed in all tissues, but most abundantly in heart, placenta, kidney, and liver

Background

Receptor for the lysosphingolipid sphingosine 1- phosphate (S1P). S1P is a bioactive lysophospholipid that elicits diverse physiological effect on most types of cells and tissues. When expressed in rat HTC4 hepatoma

cells, is capable of mediating S1P-induced cell proliferation and suppression of apoptosis.

Images



Please note: All products are 'FOR RESEARCH USE ONLY. NOT FOR USE IN DIAGNOSTIC OR THERAPEUTIC PROCEDURES'.