

# DRS-1 Polyclonal Antibody

Catalog # AP69598

## Product Information

<b>Application</b>	WB, IHC-P
<b>Primary Accession</b>	<a href="#">O75521</a>
<b>Reactivity</b>	Human
<b>Host</b>	Rabbit
<b>Clonality</b>	Polyclonal
<b>Calculated MW</b>	43585

## Additional Information

<b>Gene ID</b>	10455
<b>Other Names</b>	ECI2; DRS1; HCA88; PECI; Enoyl-CoA delta isomerase 2; mitochondrial; DRS-1; Delta(3), delta(2)-enoyl-CoA isomerase; D3, D2-enoyl-CoA isomerase; Diazepam-binding inhibitor-related protein 1; DBI-related protein 1; Dodecenoyl-CoA isomerase; Hep
<b>Dilution</b>	WB~~Western Blot: 1/500 - 1/2000. Immunohistochemistry: 1/100 - 1/300. ELISA: 1/20000. Not yet tested in other applications. IHC-P~~N/A
<b>Format</b>	Liquid in PBS containing 50% glycerol, 0.5% BSA and 0.09% (W/V) sodium azide.
<b>Storage Conditions</b>	-20°C

## Protein Information

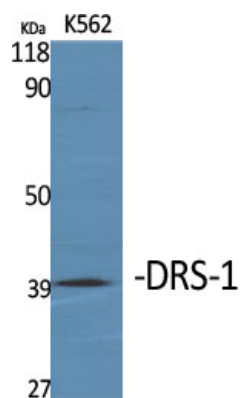
<b>Name</b>	ECI2
<b>Synonyms</b>	DRS1, HCA88, PECI {ECO:0000303   PubMed:10
<b>Function</b>	Able to isomerize both 3-cis and 3-trans double bonds into the 2-trans form in a range of enoyl-CoA species. Has a preference for 3-trans substrates.
<b>Cellular Location</b>	[Isoform 1]: Mitochondrion {ECO:0000250   UniProtKB:Q5XIC0}
<b>Tissue Location</b>	Abundant in heart, skeletal muscle and liver. Expressed in CD34(+) T-cells and CD34(+) bone marrow cells

## Background

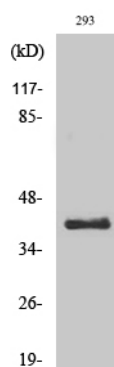
Able to isomerize both 3-cis and 3-trans double bonds into the 2-trans form in a range of enoyl-CoA species. Has a preference for 3-trans substrates (By similarity).

## Images

---



Western Blot analysis of various cells using DRS-1 Polyclonal Antibody



Western Blot analysis of 293 cells using DRS-1 Polyclonal Antibody

Please note: All products are 'FOR RESEARCH USE ONLY. NOT FOR USE IN DIAGNOSTIC OR THERAPEUTIC PROCEDURES'.