

DBP Polyclonal Antibody

Catalog # AP69480

Product Information

Application	WB, E
Primary Accession	P02774
Reactivity	Human, Monkey
Host	Rabbit
Clonality	Polyclonal
Calculated MW	52918

Additional Information

Gene ID	2638
Other Names	GC; Vitamin D-binding protein; DBP; VDB; Gc-globulin; Group-specific component
Dilution	WB~~Western Blot: 1/500 - 1/2000. ELISA: 1/40000. Not yet tested in other applications. E~~N/A
Format	Liquid in PBS containing 50% glycerol, 0.5% BSA and 0.09% (W/V) sodium azide.
Storage Conditions	-20°C

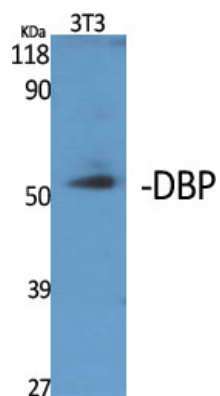
Protein Information

Name	GC
Function	Involved in vitamin D transport and storage, scavenging of extracellular G-actin, enhancement of the chemotactic activity of C5 alpha for neutrophils in inflammation and macrophage activation.
Cellular Location	Secreted.
Tissue Location	Expressed in the liver. Found in plasma, ascites, cerebrospinal fluid and urine.

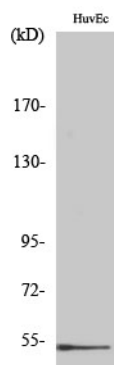
Background

Involved in vitamin D transport and storage, scavenging of extracellular G-actin, enhancement of the chemotactic activity of C5 alpha for neutrophils in inflammation and macrophage activation.

Images



Western Blot analysis of various cells using DBP Polyclonal Antibody



Western Blot analysis of COS7 cells using DBP Polyclonal Antibody

Please note: All products are 'FOR RESEARCH USE ONLY. NOT FOR USE IN DIAGNOSTIC OR THERAPEUTIC PROCEDURES'.