

# D1DR Polyclonal Antibody

Catalog # AP69460

## Product Information

Application	WB, IHC-P, IF, ICC, E
Primary Accession	<a href="#">P21728</a>
Reactivity	Human, Mouse, Rat
Host	Rabbit
Clonality	Polyclonal
Calculated MW	49293

## Additional Information

Gene ID	1812
Other Names	DRD1; D(1A) dopamine receptor; Dopamine D1 receptor
Dilution	WB~~Western Blot: 1/500 - 1/2000. Immunohistochemistry: 1/100 - 1/300. Immunofluorescence: 1/200 - 1/1000. ELISA: 1/5000. Not yet tested in other applications. IHC-P~~Western Blot: 1/500 - 1/2000. Immunohistochemistry: 1/100 - 1/300. Immunofluorescence: 1/200 - 1/1000. ELISA: 1/5000. Not yet tested in other applications. IF~~1:50~200 ICC~~N/A E~~N/A
Format	Liquid in PBS containing 50% glycerol, 0.5% BSA and 0.09% (W/V) sodium azide.
Storage Conditions	-20°C

## Protein Information

Name	DRD1
Function	Dopamine receptor whose activity is mediated by G proteins which activate adenylyl cyclase. Forms heterotetramers with DRD3 to potentiate beta-arrestin recruitment and mediate locomotor activity.
Cellular Location	Cell membrane {ECO:0000250 UniProtKB:P18901}; Multi-pass membrane protein {ECO:0000250 UniProtKB:P18901}. Endoplasmic reticulum membrane {ECO:0000250 UniProtKB:P18901}; Multi-pass membrane protein {ECO:0000250 UniProtKB:P18901}. Cell projection, cilium membrane; Multi-pass membrane protein. Cell projection, dendrite {ECO:0000250 UniProtKB:Q61616}. Cell projection, dendritic spine {ECO:0000250 UniProtKB:Q61616}. Note=Transport from the endoplasmic reticulum to the cell surface is regulated by interaction with DNAJC14 {ECO:0000250 UniProtKB:P18901}
Tissue Location	Detected in caudate, nucleus accumbens and in the olfactory tubercle.

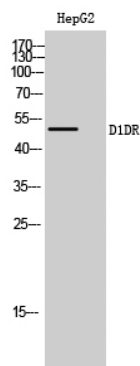
## Background

---

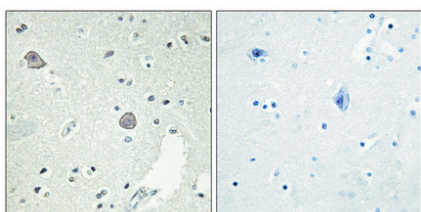
Dopamine receptor whose activity is mediated by G proteins which activate adenylyl cyclase.

## Images

---



Western Blot analysis of HepG2 cells using D1DR Polyclonal Antibody



Immunohistochemical analysis of paraffin-embedded Human brain. Antibody was diluted at 1:100(4°,overnight). High-pressure and temperature Tris-EDTA,pH8.0 was used for antigen retrieval. Negative contrl (right) obtaned from antibody was pre-absorbed by immunogen peptide.

Please note: All products are 'FOR RESEARCH USE ONLY. NOT FOR USE IN DIAGNOSTIC OR THERAPEUTIC PROCEDURES'.