

Cytokeratin 8 Polyclonal Antibody

Catalog # AP69456

Product Information

| | |
|--------------------------|------------------------|
| Application | WB, IHC-P, IF, ICC, E |
| Primary Accession | P05787 |
| Reactivity | Human, Mouse, Rat |
| Host | Rabbit |
| Clonality | Polyclonal |

Additional Information

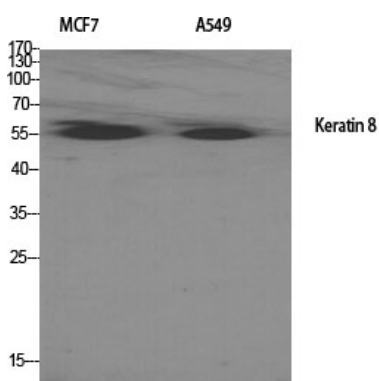
| | |
|---------------------------|---|
| Other Names | KRT8; CYK8; Keratin; type II cytoskeletal 8; Cytokeratin-8; CK-8; Keratin-8; K8; Type-II keratin Kb8 |
| Dilution | WB--Western Blot: 1/500 - 1/2000. Immunohistochemistry: 1/100 - 1/300. Immunofluorescence: 1/200 - 1/1000. ELISA: 1/5000. Not yet tested in other applications. IHC-P--N/A IF--1:50~200 ICC--N/A E--N/A |
| Format | Liquid in PBS containing 50% glycerol, 0.5% BSA and 0.09% (W/V) sodium azide. |
| Storage Conditions | -20°C |

Protein Information

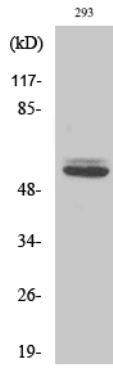
Background

Together with KRT19, helps to link the contractile apparatus to dystrophin at the costameres of striated muscle.

Images



Western Blot analysis of various cells using Cytokeratin 8 Polyclonal Antibody diluted at 1 : 2000



Western Blot analysis of 293 cells using Cytokeratin 8
Polyclonal Antibody diluted at 1 : 2000

Please note: All products are 'FOR RESEARCH USE ONLY. NOT FOR USE IN DIAGNOSTIC OR THERAPEUTIC PROCEDURES'.