

Cytokeratin 10 Polyclonal Antibody

Catalog # AP69442

Product Information

Application	WB, IHC-P, IF, ICC, E
Primary Accession	P13645
Reactivity	Human, Mouse, Rat
Host	Rabbit
Clonality	Polyclonal
Calculated MW	58827

Additional Information

Gene ID	3858
Other Names	KRT10; KPP; Keratin; type I cytoskeletal 10; Cytokeratin-10; CK-10; Keratin-10; K10
Dilution	WB~~Western Blot: 1/500 - 1/2000. Immunohistochemistry: 1/100 - 1/300. Immunofluorescence: 1/200 - 1/1000. ELISA: 1/20000. Not yet tested in other applications. IHC-P~~N/A IF~~1:50~200 ICC~~N/A E~~N/A
Format	Liquid in PBS containing 50% glycerol, 0.5% BSA and 0.09% (W/V) sodium azide.
Storage Conditions	-20°C

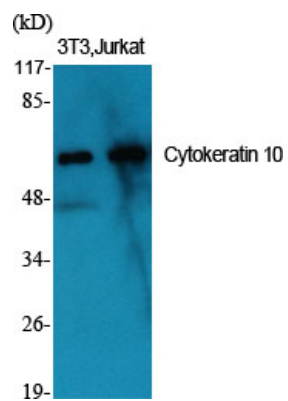
Protein Information

Name	KRT10
Synonyms	KPP
Function	Plays a role in the establishment of the epidermal barrier on plantar skin (By similarity). Involved in the maintenance of cell layer development and keratin filament bundles in suprabasal cells of the epithelium (By similarity).
Cellular Location	Secreted, extracellular space. Cell surface. Cytoplasm
Tissue Location	Seen in all suprabasal cell layers including stratum corneum. Expressed on the surface of lung cell lines (PubMed:19627498). Localized on the surface of desquamated nasal epithelial cells (at protein level) (PubMed:12427098)

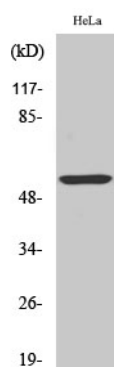
Background

Plays a role in the establishment of the epidermal barrier on plantar skin.

Images



Western Blot analysis of various cells using Cytokeratin 10 Polyclonal Antibody



Western Blot analysis of HeLa cells using Cytokeratin 10 Polyclonal Antibody

Please note: All products are 'FOR RESEARCH USE ONLY. NOT FOR USE IN DIAGNOSTIC OR THERAPEUTIC PROCEDURES'.