

CysLTR1 Polyclonal Antibody

Catalog # AP69427

Product Information

Application	WB, IHC-P, IF, ICC, E
Primary Accession	Q9Y271
Reactivity	Human, Monkey
Host	Rabbit
Clonality	Polyclonal
Calculated MW	38541

Additional Information

Gene ID	10800
Other Names	CYSLTR1; CYSLT1; Cysteinyl leukotriene receptor 1; CysLTR1; Cysteinyl leukotriene D4 receptor; LTD4 receptor; G-protein coupled receptor HG55; HMTMF81
Dilution	WB~~Western Blot: 1/500 - 1/2000. Immunohistochemistry: 1/100 - 1/300. Immunofluorescence: 1/200 - 1/1000. ELISA: 1/10000. Not yet tested in other applications. IHC-P~~N/A IF~~1:50~200 ICC~~N/A E~~N/A
Format	Liquid in PBS containing 50% glycerol, 0.5% BSA and 0.09% (W/V) sodium azide.
Storage Conditions	-20°C

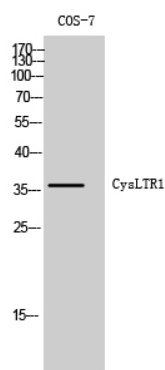
Protein Information

Name	CYSLTR1
Synonyms	CYSLT1
Function	Receptor for cysteinyl leukotrienes mediating bronchoconstriction of individuals with and without asthma. Stimulation by LTD4 results in the contraction and proliferation of smooth muscle, edema, eosinophil migration and damage to the mucus layer in the lung. This response is mediated via a G-protein that activates a phosphatidylinositol-calcium second messenger system. The rank order of affinities for the leukotrienes is LTD4 >> LTE4 = LTC4 >> LTB4.
Cellular Location	Cell membrane; Multi-pass membrane protein.
Tissue Location	Widely expressed, with highest levels in spleen and peripheral blood leukocytes. Lower expression in several tissues, such as lung (mostly in smooth muscle bundles and alveolar macrophages), placenta, small intestine,

Background

Receptor for cysteinyl leukotrienes mediating bronchoconstriction of individuals with and without asthma. Stimulation by LTD4 results in the contraction and proliferation of smooth muscle, edema, eosinophil migration and damage to the mucus layer in the lung. This response is mediated via a G-protein that activates a phosphatidylinositol-calcium second messenger system. The rank order of affinities for the leukotrienes is LTD4 >> LTE4 = LTC4 >> LTB4.

Images



Western Blot analysis of COS-7 cells using CysLTR1 Polyclonal Antibody

Please note: All products are 'FOR RESEARCH USE ONLY. NOT FOR USE IN DIAGNOSTIC OR THERAPEUTIC PROCEDURES'.