

Cyclin M2 Polyclonal Antibody

Catalog # AP69367

Product Information

Application	WB, E
Primary Accession	Q9H8M5
Reactivity	Human, Mouse, Rat
Host	Rabbit
Clonality	Polyclonal
Calculated MW	96623

Additional Information

Gene ID	54805
Other Names	CNNM2; ACDP2; Metal transporter CNNM2; Ancient conserved domain-containing protein 2; Cyclin-M2
Dilution	WB~~Western Blot: 1/500 - 1/2000. ELISA: 1/10000. Not yet tested in other applications. E~~N/A
Format	Liquid in PBS containing 50% glycerol, 0.5% BSA and 0.09% (W/V) sodium azide.
Storage Conditions	-20°C

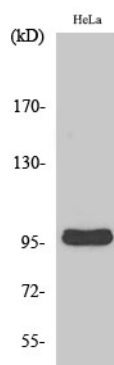
Protein Information

Name	CNNM2
Synonyms	ACDP2
Function	Divalent metal cation transporter. Mediates transport of divalent metal cations in an order of Mg(2+) > Co(2+) > Mn(2+) > Sr(2+) > Ba(2+) > Cu(2+) > Fe(2+) (By similarity).
Cellular Location	Cell membrane; Multi-pass membrane protein
Tissue Location	Widely expressed. Expressed at higher level in brain, kidney and placenta, while it is weakly expressed in skeletal muscle. In the kidney, it is expressed in the distal convoluted tubule and the thick ascending limb of Henle loop

Background

Divalent metal cation transporter. Mediates transport of divalent metal cations in an order of Mg(2+) > Co(2+) > Mn(2+) > Sr(2+) > Ba(2+) > Cu(2+) > Fe(2+) (By similarity).

Images



Western Blot analysis of various cells using Cyclin M2 Polyclonal Antibody

Please note: All products are 'FOR RESEARCH USE ONLY. NOT FOR USE IN DIAGNOSTIC OR THERAPEUTIC PROCEDURES'.