

C-TAK1 Polyclonal Antibody

Catalog # AP69330

Product Information

Application	WB, IHC-P, IF
Primary Accession	P27448
Reactivity	Human, Mouse, Rat
Host	Rabbit
Clonality	Polyclonal
Calculated MW	84429

Additional Information

Gene ID	4140
Other Names	MARK3; CTAK1; EMK2; MAP/microtubule affinity-regulating kinase 3; C-TAK1; cTAK1; Cdc25C-associated protein kinase 1; ELKL motif kinase 2; EMK-2; Protein kinase STK10; Ser/Thr protein kinase PAR-1; Par-1a; Serine/threonine-protein kinase p78
Dilution	WB~~Western Blot: 1/500 - 1/2000. Immunohistochemistry: 1/100 - 1/300. Immunofluorescence: 1/200 - 1/1000. ELISA: 1/40000. Not yet tested in other applications. IHC-P~~N/A IF~~1:50~200
Format	Liquid in PBS containing 50% glycerol, 0.5% BSA and 0.09% (W/V) sodium azide.
Storage Conditions	-20°C

Protein Information

Name	MARK3
Synonyms	CTAK1, EMK2
Function	Serine/threonine-protein kinase (PubMed: 16822840 , PubMed: 16980613 , PubMed: 23666762). Involved in the specific phosphorylation of microtubule-associated proteins for MAP2 and MAP4. Phosphorylates the microtubule-associated protein MAPT/TAU (PubMed: 23666762). Phosphorylates CDC25C on 'Ser-216' (PubMed: 12941695). Regulates localization and activity of some histone deacetylases by mediating phosphorylation of HDAC7, promoting subsequent interaction between HDAC7 and 14-3-3 and export from the nucleus (PubMed: 16980613). Regulates localization and activity of MITF by mediating its phosphorylation, promoting subsequent interaction between MITF and 14-3-3 and retention in the cytosol (PubMed: 16822840). Negatively regulates the Hippo signaling pathway and antagonizes the phosphorylation of LATS1. Cooperates with

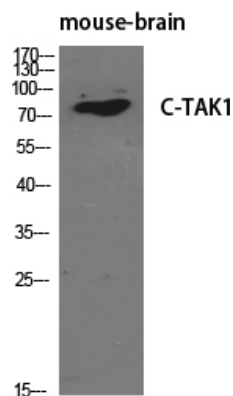
DLG5 to inhibit the kinase activity of STK3/MST2 toward LATS1 (PubMed:[28087714](#)). Phosphorylates PKP2 and KSR1 (PubMed:[12941695](#)).

Cellular Location	Cell membrane; Peripheral membrane protein. Cell projection, dendrite. Cytoplasm
Tissue Location	Ubiquitous.

Background

Serine/threonine-protein kinase (PubMed: [23666762](#)). Involved in the specific phosphorylation of microtubule-associated proteins for MAP2 and MAP4. Phosphorylates the microtubule-associated protein MAPT/TAU (PubMed:[23666762](#)). Phosphorylates CDC25C on 'Ser-216'. Regulates localization and activity of some histone deacetylases by mediating phosphorylation of HDAC7, promoting subsequent interaction between HDAC7 and 14-3-3 and export from the nucleus (PubMed:[16980613](#)). Negatively regulates the Hippo signaling pathway and antagonizes the phosphorylation of LATS1. Cooperates with DLG5 to inhibit the kinase activity of STK3/MST2 toward LATS1 (PubMed:[28087714](#)).

Images



Western Blot analysis of various cells using C-TAK1 Polyclonal Antibody diluted at 1 : 500



Western Blot analysis of 293 cells using C-TAK1 Polyclonal Antibody diluted at 1 : 500

Please note: All products are 'FOR RESEARCH USE ONLY. NOT FOR USE IN DIAGNOSTIC OR THERAPEUTIC PROCEDURES'.