

# CLPTM1 Polyclonal Antibody

Catalog # AP69163

## Product Information

---

Application	WB, IF
Primary Accession	<a href="#">O96005</a>
Reactivity	Human, Mouse, Monkey
Host	Rabbit
Clonality	Polyclonal
Calculated MW	76097

## Additional Information

---

Gene ID	1209
Other Names	CLPTM1; Cleft lip and palate transmembrane protein 1
Dilution	WB~~Western Blot: 1/500 - 1/2000. Immunofluorescence: 1/200 - 1/1000. ELISA: 1/10000. Not yet tested in other applications. IF~~1:50~200
Format	Liquid in PBS containing 50% glycerol, 0.5% BSA and 0.09% (W/V) sodium azide.
Storage Conditions	-20°C

## Protein Information

---

Name	CLPTM1
Function	Involved in GABAergic but not glutamatergic transmission. Binds and traps GABAA receptors in the endoplasmic reticulum (ER). Modulates postsynaptic GABAergic transmission, and therefore inhibitory neurotransmission, by reducing the plasma membrane expression of these receptors. Altered GABAergic signaling is one among many causes of cleft palate (By similarity). Might function as a lipid scramblase, translocating lipids in membranes from one leaflet to the other one (By similarity). Required for efficient glycosylphosphatidylinositol (GPI) inositol deacylation in the ER, which is a crucial step to switch GPI- anchored proteins (GPI-APs) from protein folding to transport states (PubMed: <a href="#">29255114</a> ). May play a role in T-cell development (By similarity).
Cellular Location	Membrane; Multi-pass membrane protein
Tissue Location	Widely expressed..

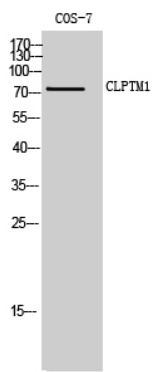
## Background

---

May play a role in T-cell development.

Images

---



Western Blot analysis of COS-7 cells using CLPTM1 Polyclonal Antibody

Please note: All products are 'FOR RESEARCH USE ONLY. NOT FOR USE IN DIAGNOSTIC OR THERAPEUTIC PROCEDURES'.