

Choriogonadotropin β Polyclonal Antibody

Catalog # AP69096

Product Information

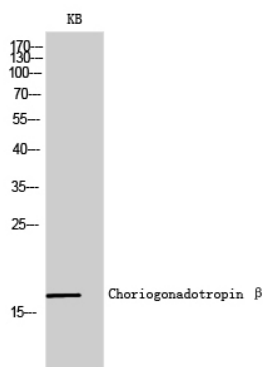
Application	WB, IHC-P
Primary Accession	P01233
Reactivity	Human
Host	Rabbit
Clonality	Polyclonal

Additional Information

Other Names	CGB; CGB3; CGB5; CGB7; CGB8; Choriogonadotropin subunit beta; CG-beta; Chorionic gonadotrophin chain beta
Dilution	WB~~Western Blot: 1/500 - 1/2000. Immunohistochemistry: 1/100 - 1/300. ELISA: 1/10000. Not yet tested in other applications. IHC-P~~N/A
Format	Liquid in PBS containing 50% glycerol, 0.5% BSA and 0.09% (W/V) sodium azide.
Storage Conditions	-20°C

Protein Information

Images



Western Blot analysis of KB cells using
Choriogonadotropin β Polyclonal Antibody diluted at
1 : 2000

Please note: All products are 'FOR RESEARCH USE ONLY. NOT FOR USE IN DIAGNOSTIC OR THERAPEUTIC PROCEDURES'.