

# CDCP1 Polyclonal Antibody

Catalog # AP69005

## Product Information

---

|                   |                        |
|-------------------|------------------------|
| Application       | WB                     |
| Primary Accession | <a href="#">Q9H5V8</a> |
| Reactivity        | Human, Mouse           |
| Host              | Rabbit                 |
| Clonality         | Polyclonal             |
| Calculated MW     | 92932                  |

## Additional Information

---

|                    |   |
|--------------------|---|
| Gene ID            | 64866   |
| Other Names        | CDCP1; TRASK; CUB domain-containing protein 1; Membrane glycoprotein gp140; Subtractive immunization M plus HEP3-associated 135 kDa protein; SIMA135; Transmembrane and associated with src kinases; CD antigen CD318 |
| Dilution           | WB~~Western Blot: 1/500 - 1/2000. ELISA: 1/10000. Not yet tested in other applications.   |
| Format             | Liquid in PBS containing 50% glycerol, 0.5% BSA and 0.09% (W/V) sodium azide.   |
| Storage Conditions | -20°C   |

## Protein Information

---

|                   |   |
|-------------------|---|
| Name              | CDCP1   |
| Synonyms          | TRASK   |
| Function          | May be involved in cell adhesion and cell matrix association. May play a role in the regulation of anchorage versus migration or proliferation versus differentiation via its phosphorylation. May be a novel marker for leukemia diagnosis and for immature hematopoietic stem cell subsets. Belongs to the tetraspanin web involved in tumor progression and metastasis.      |
| Cellular Location | [Isoform 1]: Cell membrane; Single- pass membrane protein. Note=Shedding may also lead to a soluble peptide   |
| Tissue Location   | Highly expressed in mitotic cells with low expression during interphase. Detected at highest levels in skeletal muscle and colon with lower levels in kidney, small intestine, placenta and lung. Up-regulated in a number of human tumor cell lines, as well as in colorectal cancer, breast carcinoma and lung cancer. Also expressed in cells with phenotypes reminiscent of |

mesenchymal stem cells and neural stem cells.

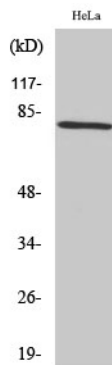
## Background

---

May be involved in cell adhesion and cell matrix association. May play a role in the regulation of anchorage versus migration or proliferation versus differentiation via its phosphorylation. May be a novel marker for leukemia diagnosis and for immature hematopoietic stem cell subsets. Belongs to the tetraspanin web involved in tumor progression and metastasis.

## Images

---



Western Blot analysis of various cells using CDCP1 Polyclonal Antibody

Please note: All products are 'FOR RESEARCH USE ONLY. NOT FOR USE IN DIAGNOSTIC OR THERAPEUTIC PROCEDURES'.