

CdcA3 Polyclonal Antibody

Catalog # AP69002

Product Information

Application	WB, IHC-P, IF, ICC, E
Primary Accession	Q99618
Reactivity	Human, Mouse, Rat
Host	Rabbit
Clonality	Polyclonal
Calculated MW	28998

Additional Information

Gene ID	83461
Other Names	CDCA3; C8; GRCC8; TOME1; Cell division cycle-associated protein 3; Gene-rich cluster protein C8; Trigger of mitotic entry protein 1; TOME-1
Dilution	WB~~Western Blot: 1/500 - 1/2000. Immunohistochemistry: 1/100 - 1/300. Immunofluorescence: 1/200 - 1/1000. ELISA: 1/5000. Not yet tested in other applications. IHC-P~~N/A IF~~1:50~200 ICC~~N/A E~~N/A
Format	Liquid in PBS containing 50% glycerol, 0.5% BSA and 0.09% (W/V) sodium azide.
Storage Conditions	-20°C

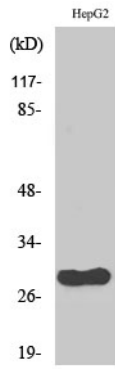
Protein Information

Name	CDCA3
Synonyms	C8, GRCC8, TOME1
Function	F-box-like protein which is required for entry into mitosis. Acts by participating in E3 ligase complexes that mediate the ubiquitination and degradation of WEE1 kinase at G2/M phase (By similarity).
Cellular Location	Cytoplasm, cytosol.

Background

F-box-like protein which is required for entry into mitosis. Acts by participating in E3 ligase complexes that mediate the ubiquitination and degradation of WEE1 kinase at G2/M phase (By similarity).

Images



Western Blot analysis of various cells using CdcA3 Polyclonal Antibody

Please note: All products are 'FOR RESEARCH USE ONLY. NOT FOR USE IN DIAGNOSTIC OR THERAPEUTIC PROCEDURES'.