

Cdc40 Polyclonal Antibody

Catalog # AP68990

Product Information

Application	WB, IHC-P, IF, ICC, E
Primary Accession	O60508
Reactivity	Human, Mouse, Rat
Host	Rabbit
Clonality	Polyclonal
Calculated MW	65521

Additional Information

Gene ID	51362
Other Names	CDC40; EHB3; PRP17; PRPF17; Pre-mRNA-processing factor 17; Cell division cycle 40 homolog; EH-binding protein 3; Ehb3; PRP17 homolog; hPRP17
Dilution	WB~~Western Blot: 1/500 - 1/2000. Immunohistochemistry: 1/100 - 1/300. ELISA: 1/40000. Not yet tested in other applications. IHC-P~~N/A IF~~1:50~200 ICC~~N/A E~~N/A
Format	Liquid in PBS containing 50% glycerol, 0.5% BSA and 0.09% (W/V) sodium azide.
Storage Conditions	-20°C

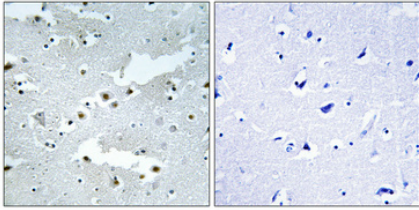
Protein Information

Name	CDC40
Synonyms	EHB3, PRP17, PRPF17
Function	Required for pre-mRNA splicing as component of the activated spliceosome (PubMed: 33220177). Plays an important role in embryonic brain development; this function does not require proline isomerization (PubMed: 33220177).
Cellular Location	Nucleus. Nucleus speckle

Background

Associates with the spliceosome late in the splicing pathway and may function in the second step of pre-mRNA splicing.

Images



Immunohistochemical analysis of paraffin-embedded Human brain. Antibody was diluted at 1:100(4°,overnight). High-pressure and temperature Tris-EDTA,pH8.0 was used for antigen retrieval. Negative contrl (right) obtaned from antibody was pre-absorbed by immunogen peptide.

Please note: All products are 'FOR RESEARCH USE ONLY. NOT FOR USE IN DIAGNOSTIC OR THERAPEUTIC PROCEDURES'.