

# Cdc37 Polyclonal Antibody

Catalog # AP68988

## Product Information

---

<b>Application</b>	WB, IHC-P, IF, ICC, E
<b>Primary Accession</b>	<a href="#">Q16543</a>
<b>Reactivity</b>	Human, Mouse, Rat, Monkey
<b>Host</b>	Rabbit
<b>Clonality</b>	Polyclonal
<b>Calculated MW</b>	44468

## Additional Information

---

<b>Gene ID</b>	11140
<b>Other Names</b>	CDC37; CDC37A; Hsp90 co-chaperone Cdc37; Hsp90 chaperone protein kinase-targeting subunit; p50Cdc37
<b>Dilution</b>	WB~~Western Blot: 1/500 - 1/2000. Immunohistochemistry: 1/100 - 1/300. Immunofluorescence: 1/200 - 1/1000. ELISA: 1/20000. Not yet tested in other applications. IHC-P~~N/A IF~~1:50~200 ICC~~N/A E~~N/A
<b>Format</b>	Liquid in PBS containing 50% glycerol, 0.5% BSA and 0.09% (W/V) sodium azide.
<b>Storage Conditions</b>	-20°C

## Protein Information

---

<b>Name</b>	CDC37
<b>Synonyms</b>	CDC37A
<b>Function</b>	Co-chaperone that binds to numerous kinases and promotes their interaction with the Hsp90 complex, resulting in stabilization and promotion of their activity (PubMed: <a href="#">8666233</a> ). Inhibits HSP90AA1 ATPase activity (PubMed: <a href="#">23569206</a> ).
<b>Cellular Location</b>	Cytoplasm.

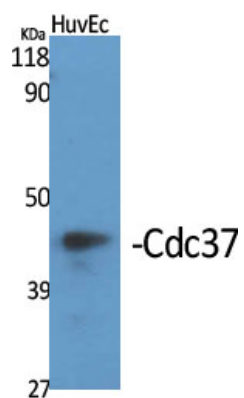
## Background

---

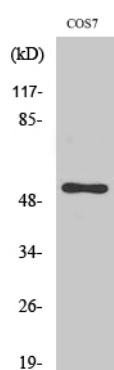
Co-chaperone that binds to numerous kinases and promotes their interaction with the Hsp90 complex, resulting in stabilization and promotion of their activity (PubMed:[8666233](#)). Inhibits HSP90AA1 ATPase activity (PubMed:[23569206](#)).

## Images

---



Western Blot analysis of various cells using Cdc37 Polyclonal Antibody



Western Blot analysis of MCF7 cells using Cdc37 Polyclonal Antibody

Please note: All products are 'FOR RESEARCH USE ONLY. NOT FOR USE IN DIAGNOSTIC OR THERAPEUTIC PROCEDURES'.