

# Cdc23 Polyclonal Antibody

Catalog # AP68975

## Product Information

---

<b>Application</b>	WB
<b>Primary Accession</b>	<a href="#">Q9UJX2</a>
<b>Reactivity</b>	Human, Mouse, Monkey
<b>Host</b>	Rabbit
<b>Clonality</b>	Polyclonal
<b>Calculated MW</b>	68834

## Additional Information

---

<b>Gene ID</b>	8697
<b>Other Names</b>	CDC23; ANAPC8; Cell division cycle protein 23 homolog; Anaphase-promoting complex subunit 8; APC8; Cyclosome subunit 8
<b>Dilution</b>	WB--Western Blot: 1/500 - 1/2000. ELISA: 1/20000. Not yet tested in other applications.
<b>Format</b>	Liquid in PBS containing 50% glycerol, 0.5% BSA and 0.09% (W/V) sodium azide.
<b>Storage Conditions</b>	-20°C

## Protein Information

---

<b>Name</b>	CDC23
<b>Synonyms</b>	ANAPC8
<b>Function</b>	Component of the anaphase promoting complex/cyclosome (APC/C), a cell cycle-regulated E3 ubiquitin ligase that controls progression through mitosis and the G1 phase of the cell cycle (PubMed: <a href="#">18485873</a> ). The APC/C complex acts by mediating ubiquitination and subsequent degradation of target proteins: it mainly mediates the formation of 'Lys-11'-linked polyubiquitin chains and, to a lower extent, the formation of 'Lys-48'- and 'Lys-63'-linked polyubiquitin chains (PubMed: <a href="#">18485873</a> ). The APC/C complex catalyzes assembly of branched 'Lys-11'-/'Lys-48'-linked branched ubiquitin chains on target proteins (PubMed: <a href="#">29033132</a> ).

## Background

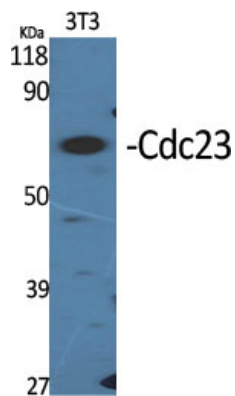
---

Component of the anaphase promoting complex/cyclosome (APC/C), a cell cycle-regulated E3 ubiquitin ligase that controls progression through mitosis and the G1 phase of the cell cycle. The APC/C complex acts

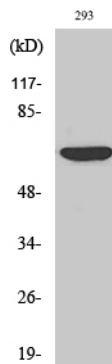
by mediating ubiquitination and subsequent degradation of target proteins: it mainly mediates the formation of 'Lys-11'-linked polyubiquitin chains and, to a lower extent, the formation of 'Lys-48'- and 'Lys-63'-linked polyubiquitin chains.

## Images

---



Western Blot analysis of various cells using Cdc23  
Polyclonal Antibody diluted at 1 : 2000



Western Blot analysis of COS7 cells using Cdc23  
Polyclonal Antibody diluted at 1 : 2000

Please note: All products are 'FOR RESEARCH USE ONLY. NOT FOR USE IN DIAGNOSTIC OR THERAPEUTIC PROCEDURES'.