

CD205 Polyclonal Antibody

Catalog # AP68921

Product Information

Application	WB
Primary Accession	O60449
Reactivity	Human
Host	Rabbit
Clonality	Polyclonal
Calculated MW	198311

Additional Information

Gene ID	100526664;4065
Other Names	LY75; CD205; CLEC13B; Lymphocyte antigen 75; Ly-75; C-type lectin domain family 13 member B; DEC-205; gp200-MR6; CD antigen CD205
Dilution	WB~~Western Blot: 1/500 - 1/2000. ELISA: 1/40000. Not yet tested in other applications.
Format	Liquid in PBS containing 50% glycerol, 0.5% BSA and 0.09% (W/V) sodium azide.
Storage Conditions	-20°C

Protein Information

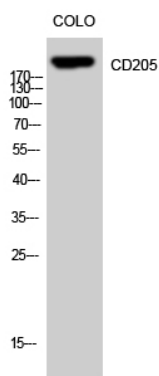
Name	LY75
Synonyms	CD205, CLEC13B
Function	Acts as an endocytic receptor to direct captured antigens from the extracellular space to a specialized antigen-processing compartment (By similarity). Causes reduced proliferation of B- lymphocytes.
Cellular Location	Membrane; Single-pass type I membrane protein
Tissue Location	Expressed in spleen, thymus, colon and peripheral blood lymphocytes. Detected in myeloid and B-lymphoid cell lines Isoform 2 and isoform 3 are expressed in malignant Hodgkin lymphoma cells called Hodgkin and Reed-Sternberg (HRS) cells

Background

Acts as an endocytic receptor to direct captured antigens from the extracellular space to a specialized

antigen- processing compartment (By similarity). Causes reduced proliferation of B-lymphocytes.

Images



Western Blot analysis of CoLo cells using CD205 Polyclonal Antibody

Please note: All products are 'FOR RESEARCH USE ONLY. NOT FOR USE IN DIAGNOSTIC OR THERAPEUTIC PROCEDURES'.