

# FAM3B Antibody (N-term)

Affinity Purified Rabbit Polyclonal Antibody (Pab)

Catalog # AP6891a

## Product Information

---

<b>Application</b>	IHC-P, FC, WB, E
<b>Primary Accession</b>	<a href="#">P58499</a>
<b>Reactivity</b>	Human
<b>Host</b>	Rabbit
<b>Clonality</b>	Polyclonal
<b>Isotype</b>	Rabbit IgG
<b>Clone Names</b>	RB21063
<b>Calculated MW</b>	25982
<b>Antigen Region</b>	24-51

## Additional Information

---

<b>Gene ID</b>	54097
<b>Other Names</b>	Protein FAM3B, Cytokine-like protein 2-21, Pancreatic-derived factor, PANDER, FAM3B, C21orf11, C21orf76
<b>Target/Specificity</b>	This FAM3B antibody is generated from rabbits immunized with a KLH conjugated synthetic peptide between 24-51 amino acids from the N-terminal region of human FAM3B.
<b>Dilution</b>	IHC-P~~1:100~500 FC~~1:10~50 WB~~1:1000 E~~Use at an assay dependent concentration.
<b>Format</b>	Purified polyclonal antibody supplied in PBS with 0.09% (W/V) sodium azide. This antibody is purified through a protein A column, followed by peptide affinity purification.
<b>Storage</b>	Maintain refrigerated at 2-8°C for up to 2 weeks. For long term storage store at -20°C in small aliquots to prevent freeze-thaw cycles.
<b>Precautions</b>	FAM3B Antibody (N-term) is for research use only and not for use in diagnostic or therapeutic procedures.

## Protein Information

---

<b>Name</b>	FAM3B
<b>Synonyms</b>	C21orf11, C21orf76
<b>Function</b>	Induces apoptosis of alpha and beta cells in a dose- and time-dependent

manner.

## Cellular Location

Secreted. Note=Present in insulin secretory granules and likely cosecreted with insulin. Localized in discrete vesicular and perinuclear structure

## Tissue Location

Highly expressed in the pancreas. Also found in the colon, kidney, prostate, small intestine and testis

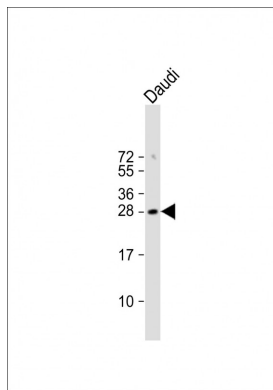
## Background

FAM3B has delayed effects on beta-cell function, inhibiting basal insulin secretion from a beta-cell line in a dose-dependent manner.

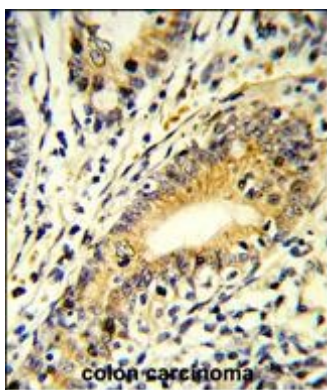
## References

Yang,J., et.al., Biochemistry 44 (34), 11342-11352 (2005)

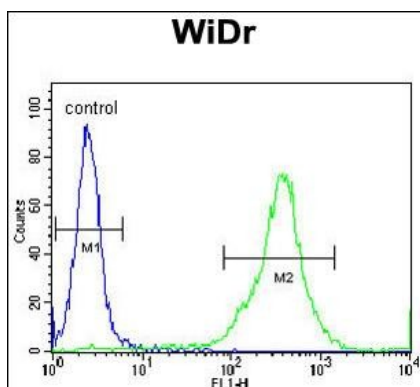
## Images



Anti-FAM3B Antibody (N-term) at 1:1000 dilution + Daudi whole cell lysates. Lysates/proteins at 20 µg per lane. Secondary Goat Anti-Rabbit IgG, (H+L), Peroxidase conjugated at 1/10000 dilution. Predicted band size : 26 kDa Blocking/Dilution buffer: 5% NFDM/TBST.



Formalin-fixed and paraffin-embedded human colon carcinoma reacted with FAM3B Antibody (N-term), which was peroxidase-conjugated to the secondary antibody, followed by DAB staining. This data demonstrates the use of this antibody for immunohistochemistry; clinical relevance has not been evaluated.



FAM3B Antibody (N-term) (Cat. #AP6891a) flow cytometric analysis of WiDr cells (right histogram) compared to a negative control cell (left histogram). FITC-conjugated goat-anti-rabbit secondary antibodies were used for the analysis.

Please note: All products are 'FOR RESEARCH USE ONLY. NOT FOR USE IN DIAGNOSTIC OR THERAPEUTIC PROCEDURES'.