

# Cathepsin B Polyclonal Antibody

Catalog # AP68862

## Product Information

Application	WB, IHC-P, IF, ICC, E
Primary Accession	<a href="#">P07858</a>
Reactivity	Human, Mouse, Rat
Host	Rabbit
Clonality	Polyclonal
Calculated MW	37822

## Additional Information

Gene ID	1508
Other Names	CTSB; CPSB; Cathepsin B; APP secretase; APPS; Cathepsin B1
Dilution	WB~~Western Blot: 1/500 - 1/2000. Immunohistochemistry: 1/100 - 1/300. ELISA: 1/5000. Not yet tested in other applications. IHC-P~~Western Blot: 1/500 - 1/2000. Immunohistochemistry: 1/100 - 1/300. ELISA: 1/5000. Not yet tested in other applications. IF~~1:50~200 ICC~~N/A E~~N/A
Format	Liquid in PBS containing 50% glycerol, 0.5% BSA and 0.09% (W/V) sodium azide.
Storage Conditions	-20°C

## Protein Information

Name	CTSB
Synonyms	CPSB
Function	Thiol protease which is believed to participate in intracellular degradation and turnover of proteins (PubMed: <a href="#">12220505</a> ). Cleaves matrix extracellular phosphoglycoprotein MEPE (PubMed: <a href="#">12220505</a> ). Involved in the solubilization of cross-linked TG/thyroglobulin in the thyroid follicle lumen (By similarity). Has also been implicated in tumor invasion and metastasis (PubMed: <a href="#">3972105</a> ).
Cellular Location	Lysosome. Melanosome. Secreted, extracellular space {ECO:0000250 UniProtKB:A1E295}. Apical cell membrane {ECO:0000250 UniProtKB:P10605}; Peripheral membrane protein {ECO:0000250 UniProtKB:P10605}; Extracellular side {ECO:0000250 UniProtKB:P10605}. Note=Identified by mass spectrometry in melanosome fractions from stage I to stage IV (PubMed:17081065) Localizes to the lumen of thyroid follicles and to the apical membrane of thyroid

epithelial cells (By similarity) {ECO:0000250|UniProtKB:P10605, ECO:0000269|PubMed:17081065}

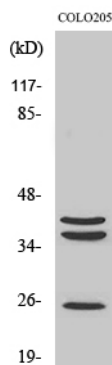
## Tissue Location

Expressed in the stratum spinosum of the epidermis. Weak expression is detected in the stratum granulosum

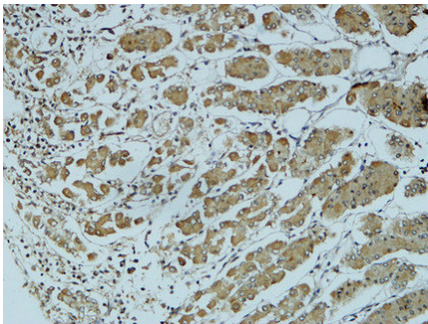
## Background

Thiol protease which is believed to participate in intracellular degradation and turnover of proteins (PubMed:[12220505](#)). Cleaves matrix extracellular phosphoglycoprotein MEPE (PubMed:[12220505](#)). Has also been implicated in tumor invasion and metastasis (PubMed:[3972105](#)).

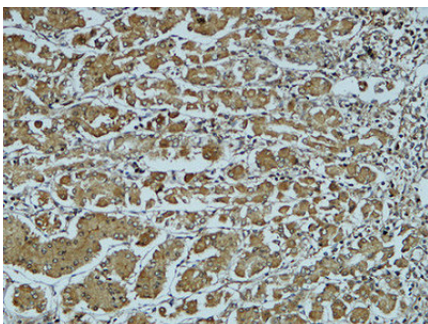
## Images



Western Blot analysis of various cells using Cathepsin B Polyclonal Antibody

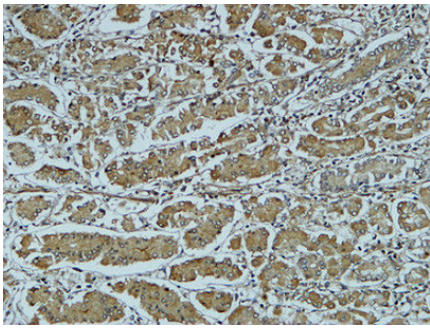


Immunohistochemical analysis of paraffin-embedded Human colon. 1, Antibody was diluted at 1:200(4°,overnight). 2, High-pressure and temperature EDTA, pH8.0 was used for antigen retrieval. 3,Secondary antibody was diluted at 1:200(room temperature, 30min).



Immunohistochemical analysis of paraffin-embedded Human colon. 1, Antibody was diluted at 1:200(4°,overnight). 2, High-pressure and temperature EDTA, pH8.0 was used for antigen retrieval. 3,Secondary antibody was diluted at 1:200(room temperature, 30min).

Immunohistochemical analysis of paraffin-embedded Human colon. 1, Antibody was diluted at 1:200(4°,overnight). 2, High-pressure and temperature EDTA, pH8.0 was used for antigen retrieval. 3,Secondary antibody was diluted at 1:200(room temperature, 30min).



Please note: All products are 'FOR RESEARCH USE ONLY. NOT FOR USE IN DIAGNOSTIC OR THERAPEUTIC PROCEDURES'.