

Cadherin-16 Polyclonal Antibody

Catalog # AP68777

Product Information

Application	WB, IHC-P, IF, ICC, E
Primary Accession	O75309
Reactivity	Human, Rat, Mouse
Host	Rabbit
Clonality	Polyclonal
Calculated MW	89923

Additional Information

Gene ID	1014
Other Names	CDH16; Cadherin-16; Kidney-specific cadherin; Ksp-cadherin
Dilution	WB~~Western Blot: 1/500 - 1/2000. Immunohistochemistry: 1/100 - 1/300. Immunofluorescence: 1/200 - 1/1000. ELISA: 1/10000. Not yet tested in other applications. IHC-P~~N/A IF~~1:50~200 ICC~~N/A E~~N/A
Format	Liquid in PBS containing 50% glycerol, 0.5% BSA and 0.09% (W/V) sodium azide.
Storage Conditions	-20°C

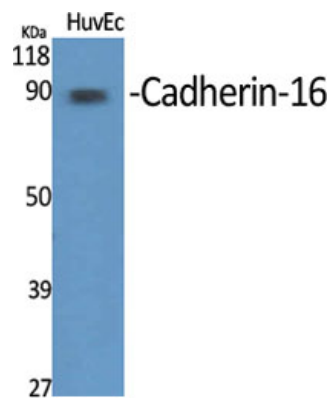
Protein Information

Name	CDH16
Function	Cadherins are calcium-dependent cell adhesion proteins. They preferentially interact with themselves in a homophilic manner in connecting cells; cadherins may thus contribute to the sorting of heterogeneous cell types.
Cellular Location	Cell membrane; Single-pass type I membrane protein
Tissue Location	Kidney specific.

Background

Cadherins are calcium-dependent cell adhesion proteins. They preferentially interact with themselves in a homophilic manner in connecting cells; cadherins may thus contribute to the sorting of heterogeneous cell types.

Images



Western Blot analysis of various cells using Cadherin-16
 Polyclonal Antibody diluted at 1 : 1000



Western Blot analysis of A549 cells using Cadherin-16
 Polyclonal Antibody diluted at 1 : 1000

Please note: All products are 'FOR RESEARCH USE ONLY. NOT FOR USE IN DIAGNOSTIC OR THERAPEUTIC PROCEDURES'.